



SN-6 SERIES

Sectional Directional Control Valves

FOR MOBILE AND INDUSTRIAL HYDRAULIC APPLICATIONS



Innovative Designs
Professional Quality
Customer Satisfaction !



油力油壓工業股份有限公司
YOULI HYDRAULIC INDUSTRIAL CO.,LTD.

公司：41163 台中市太平區溪洲路 87 巷 7 號
工廠：41468 台中市烏日區大明路 145 巷 9 號

OFFICE & FACTORY :

No.9, LANE 145, TAI MING RD., WU ZIH DIST., TAICHUNG CITY, TAIWAN 41468
TEL : 886-4-2335 8996 FAX : 886-4-2335 8997
Http://www.tw-youli.com.tw/ E-mail : sales@tw-youli.com.tw

版權所有 翻印必究
COPY RIGHTS RESERVED

01.2014 / 500 05-136E/S
Survey 04-2322 7507



油力油壓工業股份有限公司
YOULI HYDRAULIC INDUSTRIAL CO.,LTD.

SN-6 Chapters 目次索引

Sectional Directional Control Valves 片式控制閥

Dimension / Spec 尺寸 / 規格	P.5
Ordering code 訂購編號	P.6
Performance data 性能資料	P.15
Inlet relief options 溢流閥選用	P.16
Spool options 心軸選用	P.17
A side options A 側選用	P.21
B side spool positioners B 側選用	P.26
Port relief 附加孔選用	P.33
Other options 其他選用	P.34
Outlet options 回油側選用	P.38



MONOBLOCK DIRECTIONAL CONTROL VALVES

塊式控制閥 MB-2 / MB-3 / MB-4 / MB-5 / MSB-5

SECTIONAL DIRECTIONAL CONTROL VALVES

片式控制閥 SN-3 / SN-4 / SN-6 / SN-8



MB-2

ONLY ONE SECTION AVAILABLE 可使用聯數 1

Nominal flow rate	額定流量	45 l/min	12 US gpm
Operating pressure (maximum)	工作壓力(最大)	250 bar	3600 psi
Back pressure (maximum) on outlet port T	背壓(最大) 出油口T	25 bar	360 psi



MB-3

AVAILABLE SECTIONS FROM 1 TO 7 可使用聯數 1~7

Nominal flow rate	額定流量	45 l/min	12 US gpm
Operating pressure (maximum)	工作壓力(最大)	315 bar	4600 psi
Back pressure (maximum) on outlet port T	背壓(最大) 出油口T	25 bar	360 psi



MB-4

AVAILABLE SECTIONS FROM 1 TO 6 可使用聯數 1~6

Nominal flow rate	額定流量	60 l/min	16 US gpm
Operating pressure (maximum)	工作壓力(最大)	315 bar	4600 psi
Back pressure (maximum) on outlet port T	背壓(最大) 出油口T	25 bar	360 psi



MB-5

AVAILABLE SECTIONS FROM 1 TO 6 可使用聯數 1~6

Nominal flow rate	額定流量	80 l/min	21 US gpm
Operating pressure (maximum)	工作壓力(最大)	315 bar	4600 psi
Back pressure (maximum) on outlet port T	背壓(最大) 出油口T	25 bar	360 psi

MSB-5

AVAILABLE SECTIONS FROM 1 TO 6 可使用聯數1~6
With Independent load check valve in each section, and optional port relief.
每聯均有獨立的止回閥，並有附加孔可安裝附加閥。



Nominal flow rate	額定流量	80 l/min	21 US gpm
Operating pressure (maximum)	工作壓力(最大)	315 bar	4600 psi
Back pressure (maximum) on outlet port T	背壓(最大)出油口T	25 bar	360 psi

SN-3

AVAILABLE SECTIONS FROM 1 TO 12 可使用聯數1~12



Nominal flow rate	額定流量	50 l/min	13 US gpm
Operating pressure (maximum)	工作壓力(最大)	315 bar	4600 psi
Back pressure (maximum) on outlet port T	背壓(最大)出油口T	25 bar	360 psi

SN-4

AVAILABLE SECTIONS FROM 1 TO 12 可使用聯數1~12



Nominal flow rate	額定流量	80 l/min	21 US gpm
Operating pressure (maximum)	工作壓力(最大)	315 bar	4600 psi
Back pressure (maximum) on outlet port T	背壓(最大)出油口T	25 bar	360 psi

SN-6

AVAILABLE SECTIONS FROM 1 TO 12 可使用聯數1~12



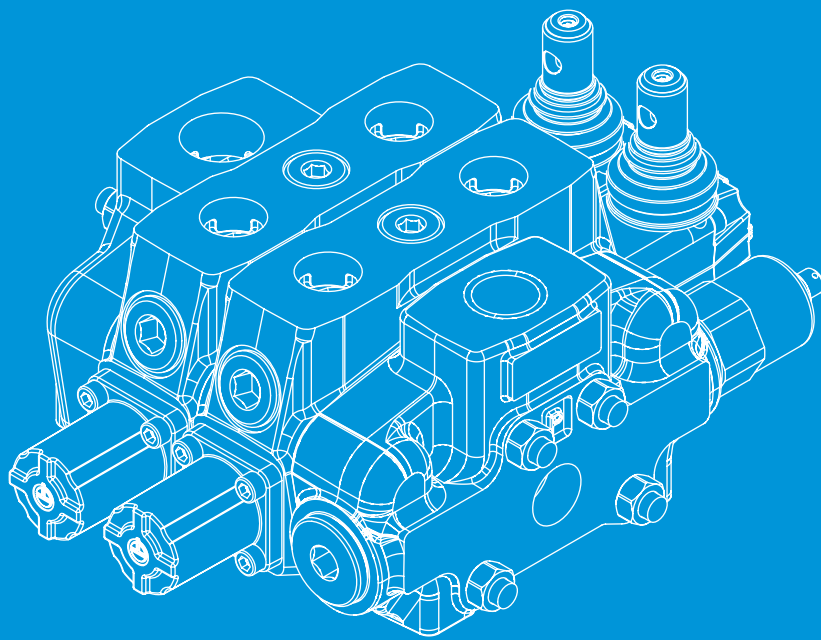
Nominal flow rate	額定流量	160 l/min	42 US gpm
Operating pressure (maximum)	工作壓力(最大)	315 bar	4600 psi
Back pressure (maximum) on outlet port T	背壓(最大)出油口T	25 bar	360 psi

SN-8

AVAILABLE SECTIONS FROM 1 TO 12 可使用聯數1~12



Nominal flow rate	額定流量	240 l/min	63 US gpm
Operating pressure (maximum)	工作壓力(最大)	315 bar	4600 psi
Back pressure (maximum) on outlet port T	背壓(最大)出油口T	25 bar	360 psi



Innovative Designs
Professional Quality
Customer Satisfaction !

創新設計 !
專業品質 !
客戶滿意度 !

AVAILABLE SECTIONS FROM
可使用的聯數

1 TO 12

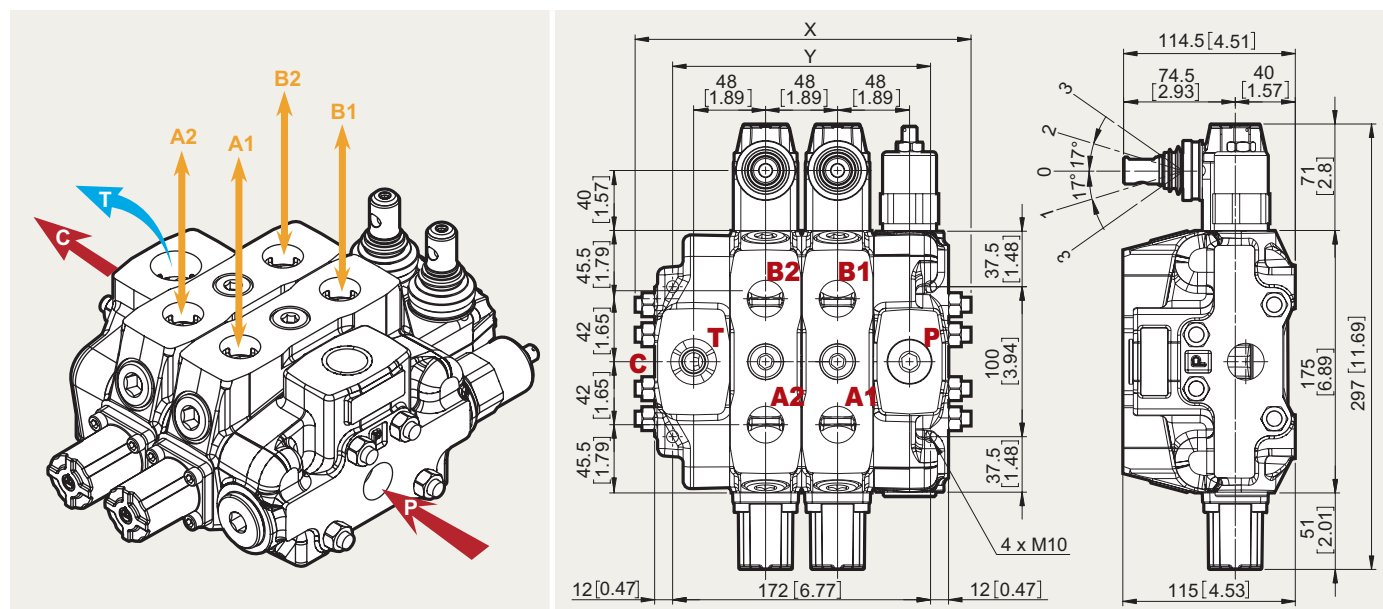
SN-6

Sectional Directional Control Valves 片式控制閥



SN-6

Sectional Directional Control Valves 片式控制閥



SN-6 Specifications 規格

Nominal flow 額定流量		160 l/min	42 US gpm
Operating pressure (maximum) 使用壓力(最大)		315 bar	4600 psi
Back pressure (maximum) 背壓(最大)	on outlet port T 回油口T	25 bar	360 psi
Fluid temperature range 流體溫度範圍	with NBR (BUNA-N) seals O環(NBR)	from -20° to 80°C	from -4° to 176° F
	with FPM (VITON) seal O環(FPM)	from -20° to 100°C	from -4° to 212° F
Viscosity 黏度係數	operating range 建議使用範圍	from 15 to 75 mm ² /s	from 15 to 75 cst
	min. 最小	12 mm ² /s	12 cst
	max. 最大	400 mm ² /s	400 cst
Ambient temperature range 環境溫度範圍		from -40° to 60°C	from -40° to 140° F

- All specifications, dimensions and design characteristics shown in this catalogue are subject to change without notice.
- 本公司之產品規格、設計特性，均不斷研究改進，尺寸規格如有變動，恕不另行通知。

Standard threads 螺紋規範

PORTS 口位	Inlet P and carry-over C 入油口	A and B 工作口	Outlet T 回油口	PILOT PORTS 引導口	Hydraulic 油壓引導口	Pneumatic 氣壓引導口
BSP	G3/4	G3/4	G1	BSP	G1/4	NPTF 1/8-27
UN-UNF	1 5/16-12 UN-2B (SAE 16)	1 1/16-12 UN-2B (SAE 12)	1 5/16-12 UN-2B (SAE 16)	UN-UNF	9/16-18 UNF-2B (SAE 6)	NPTF 1/8-27

- G-3/8 : G3 G-1/2 : G4 G-3/4 : G6 G-1 : G8 G-1 1/4 : G10 • SAE 8 : E8 SAE 10 : E10 SAE 12 : E12 SAE 16 : E16 SAE 20 : E20

Standard dimensions 標準尺寸

TYPE 聯數	X		Y		TYPE 聯數	X		Y	
	mm	in	mm	in		mm	in	mm	in
SN6 /1S 一聯	176	6.63	124	4.88	SN6 /7S 七聯	464	18.27	412	16.22
SN6 /2S 二聯	224	8.82	172	6.77	SN6 /8S 八聯	512	20.16	460	18.11
SN6 /3S 三聯	272	10.71	220	8.66	SN6 /9S 九聯	560	22.05	508	20
SN6 /4S 四聯	320	12.60	268	10.55	SN6 /10S 十聯	608	23.94	556	21.89
SN6 /5S 五聯	368	14.49	316	12.44	SN6 /11S 十一聯	656	25.83	604	23.78
SN6 /6S 六聯	416	16.38	364	14.33	SN6 /12S 十二聯	704	27.72	652	25.67

SN-6 Complete 組裝

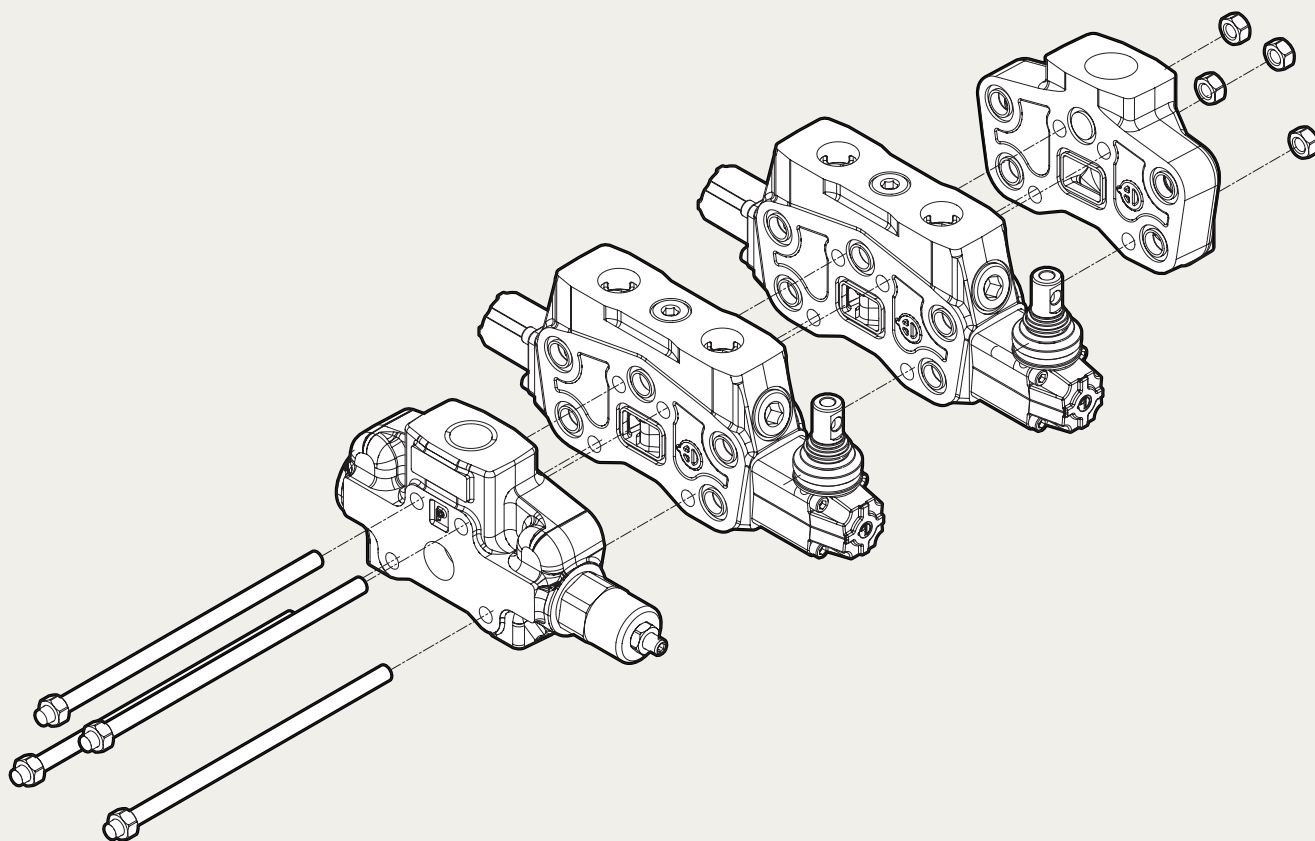
Sectional Directional Control Valves 片式控制閥

HOW TO ORDER FOR A COMPLETE ASSEMBLED VALVE

訂購範例/說明：

SN-6 / **2S** - **3** / **18L** / **28L** / **G-6-8** / **M3**

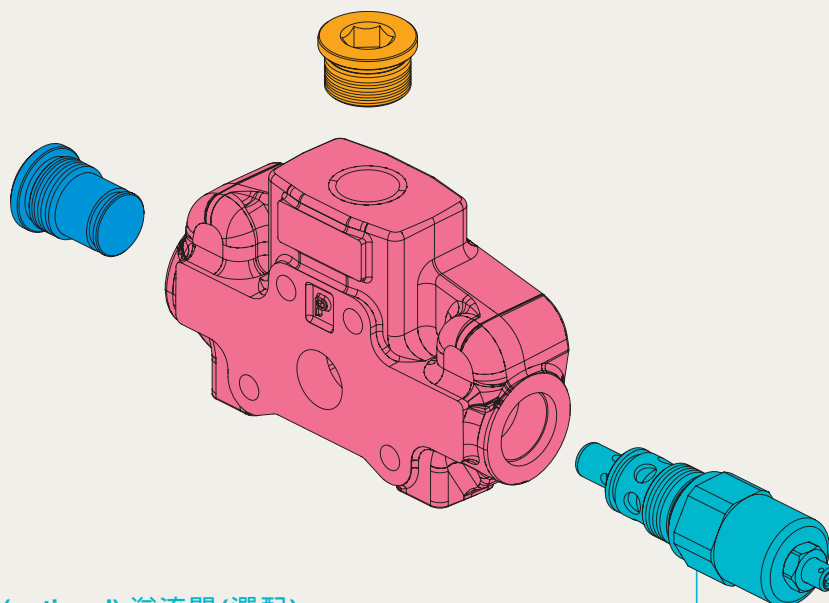
2S	No. of working section	聯數
3	Inlet cover with a main pressure relief valve	溢流閥設定
18L	1st section (complete working section)	第一聯的功能需求
28L	Following section (complete working section)	第二聯的功能需求
G-6-8	BSP ports	螺紋規格
M3	Outlet cover	迴路 / 二次壓需求



SN-6 Inlet Section 入油體

Sectional Directional Control Valves 片式控制閥

FP SN-6 / FG-3 / G-6



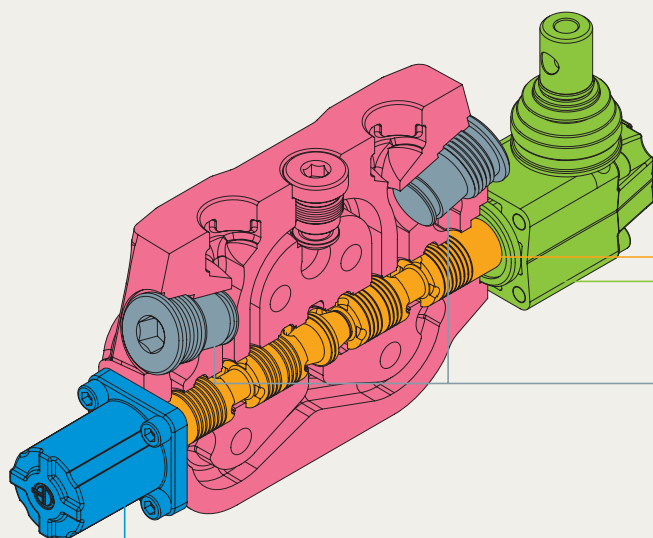
Inlet relief (optional) 溢流閥 (選配)

Inlet Relief (optional) 溢流閥 (選配)			
TYPE 型式	CODE 編號	DESCRIPTION 說明	PAGE 頁數
FG-2	YLPSN63002	Range 80 to 160 bar / 1150 to 2300 psi, standard setting 125 bar / 1800 psi 工作範圍 80-160 bar / 1150-2300 psi, 標準設定 125bar / 1800 psi	P. 16
FG-3	YLPSN63003	Range 125 to 250 bar / 1800 to 3600 psi, standard setting 175 bar / 2500 psi 工作範圍 125-250 bar / 1800-3600 psi, 標準設定 175bar / 2500 psi	P. 16
SV	YLPSN64000	Relief valve blanking plug 塞頭 / 不使用溢流閥	P. 16
XFG	YLPSN63000	Pilot operated pressure relief valve Range 25 to 315 bar/ 360 to 4600 psi, standard setting 125 bar/ 1800 psi 引導式溢流閥, 工作範圍 25-315 bar / 360-4600 psi, 標準設定 125 bar / 1800 psi	P. 16

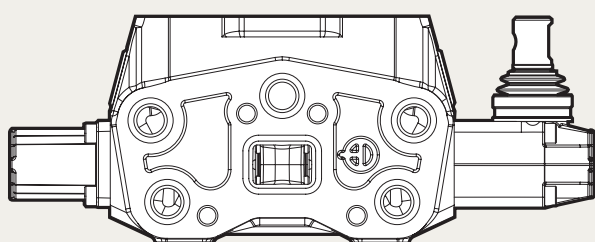
SN-6 Working Section 工作體

Sectional Directional Control Valves 片式控制閥

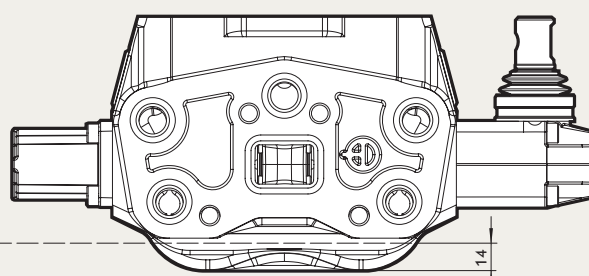
EW SN6 / 1S / S - **1** **8** **L** / **P3T** / G-6
 1 2 3 4



- 1** Spool options 心軸選用
- 2** "B" side spool positioners (optional) "B" 側選用
- 3** "A" side (optional) "A" 側選用
- 4** Port relief (optional) 附加孔選用



18L: Parallel circuit (Standard) 標準並聯體

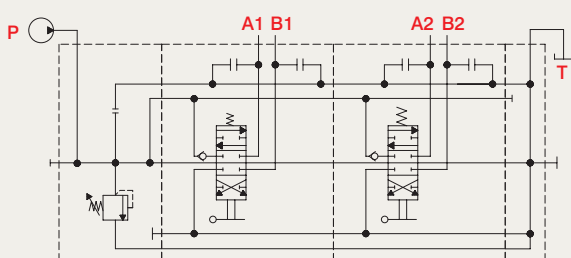


S-18L: Series circuit 串聯體

A
Mounting face
安裝面

Parallel circuit :

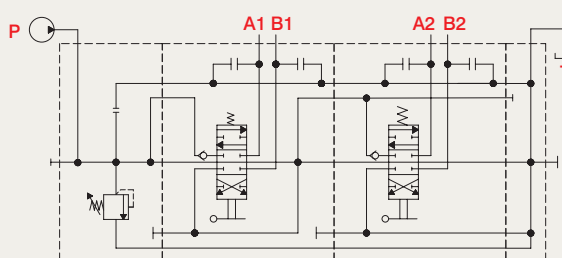
Standard configuration with open center.
標準並聯迴路



SN-6 / 2S-FG-2 / 18L / P3T / 18L / P3T / G6-6-8 / M3

Series circuit :

It need a **special working section kit**.
串聯迴路需搭配特殊體使用



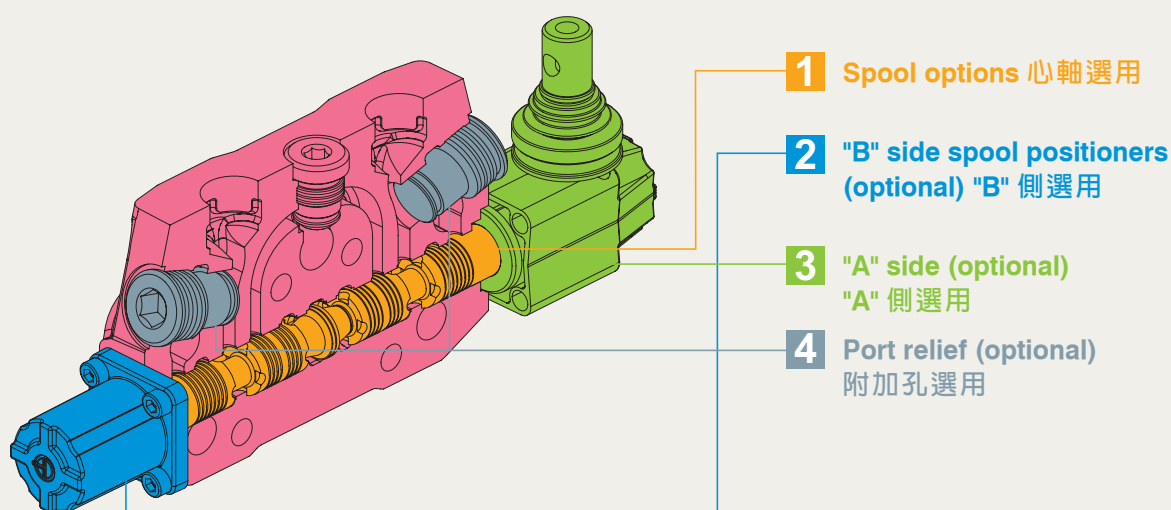
SN-6 / 2S-FG-2 / **S-18L** / P3T / 18L / P3T / G6-6-8 / M3

SN-6 Working Section 工作體

Sectional Directional Control Valves 片式控制閥

EW SN-6 / 1S / **1 8 L** / **P1(G3-100)** / G-6

1 2 3 4



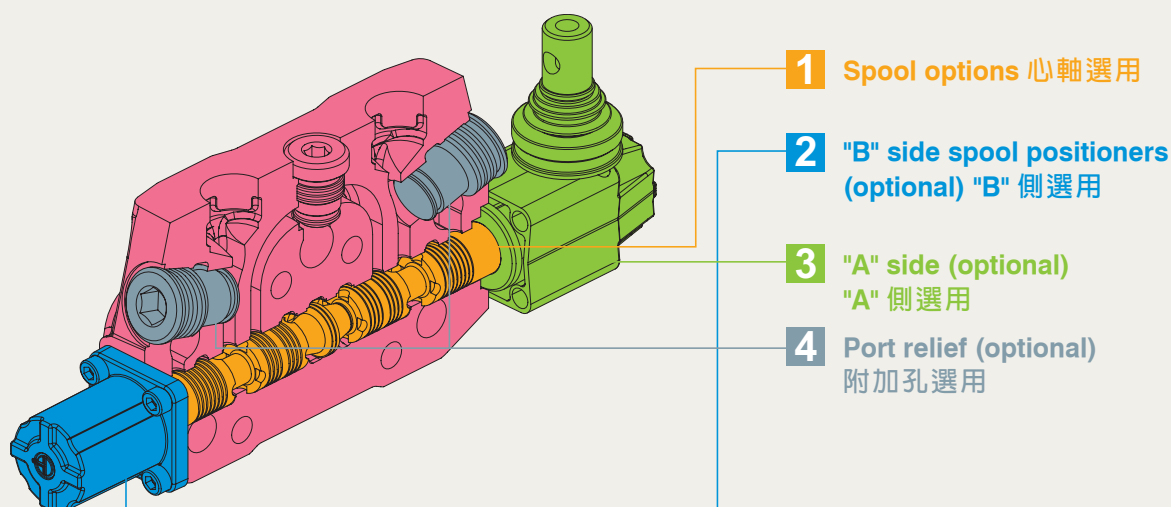
1: Spool Options 心軸			
TYPE 型式	CODE 編號	DESCRIPTION 說明	PAGE 頁數
1	YLWSN62001	Double acting, 3 positions, with A and B closed in neutral position 雙工作口 / 3 位置切換 / 中立位置 AB 口阻斷	P. 17
2	YLWSN62002	Double acting, 3 positions, with A and B open to tank in neutral position 雙工作口 / 3 位置切換 / 中立位置 AB 口通回油	P. 17
3	YLWSN62003	Single acting on A closed in neutral position, 3 positions, B plugged 單工作口 / 3 位置切換 / 中立位置 A 口阻斷 / B 口用塞頭堵住	P. 18
4	YLWSN62004	Single acting on B closed in neutral position, 3 positions, A plugged 單工作口 / 3 位置切換 / 中立位置 B 口阻斷 / A 口用塞頭堵住	P. 18
5	YLWSN62005	Double acting, 3 positions, with B open to Tank in neutral position 雙工作口 / 3 位置切換 / 中立位置 B 口通回油	P. 19
6	YLWSN62006	Double acting, 3 positions, with A open to Tank in neutral position 雙工作口 / 3 位置切換 / 中立位置 A 口通回油	P. 19
5PY	YLWSN62051	Double acting, 4 positions, floating circuit in 4th position with A, B open to Tank by pushing the lever 雙工作口 / 4 位置切換 / 中立位置 AB 口阻斷 / 第四個位置 AB 口通回油	P. 20

SN-6 Working Section 工作體

Sectional Directional Control Valves 片式控制閥

EW SN-6 / 1S / **1 8 L** / P1(G3-100) / G-6

1 2 3 4



2: B Side Spool Positioners B 側

TYPE 型式	CODE 編號	DESCRIPTION 說明	PAGE 頁數
6-1	YLWSN63061	Detent in pos. 1-0-2, without spring centered 定位 0 & 1 & 2, 不帶彈簧復位	P. 26
6-2	YLWSN63062	2 positions, detent in pos. 0-2, without spring centered 定位 0 & 2, 不帶彈簧復位	P. 26
6-3	YLWSN63063	2 positions, detent in pos. 1-0, without spring centered 定位 1 & 0, 不帶彈簧復位	P. 26
8D2	YLWSN63082	With spring return to neutral position and pin with M8 male thread for dual control 彈簧復位, 帶 M8 轉接螺紋	P. 26
8P	YLWSN63080	ON / OFF Pneumatic actuator ON / OFF 氣動控制	P. 27
8EP3	YLWSN64300	ON / OFF Electro-Pneumatic actuator ON / OFF 電氣動控制	P. 27
8MG1 (NO)	YLWSN63801	Microswitch kit operated in pos. 1 (Normally Open) 微動開關, 作用位置 1 (常開)	P. 30
8MG2 (NO)	YLWSN63802	Microswitch kit operated in pos. 2 (Normally Open) 微動開關, 作用位置 2 (常開)	P. 30
8MG3 (NO)	YLWSN63803	Microswitch kit operated in pos. 1 & 2 (Normally Open) 微動開關, 作用位置 1 & 2 (常開)	P. 30
MG (NO)	YLWSN63804	Microswitch with NO terminal 微動開關 (常開)	P. 30
8MG1 (NC)	YLWSN638011	Microswitch kit operated in pos. 1 (Normally Closed) 微動開關, 作用位置 1 (常閉)	P. 30
8MG2 (NC)	YLWSN638021	Microswitch kit operated in pos. 2 (Normally Closed) 微動開關, 作用位置 2 (常閉)	P. 30
8MG3 (NC)	YLWSN638031	Microswitch kit operated in pos. 1 & 2 (Normally Closed) 微動開關, 作用位置 1 & 2 (常閉)	P. 30

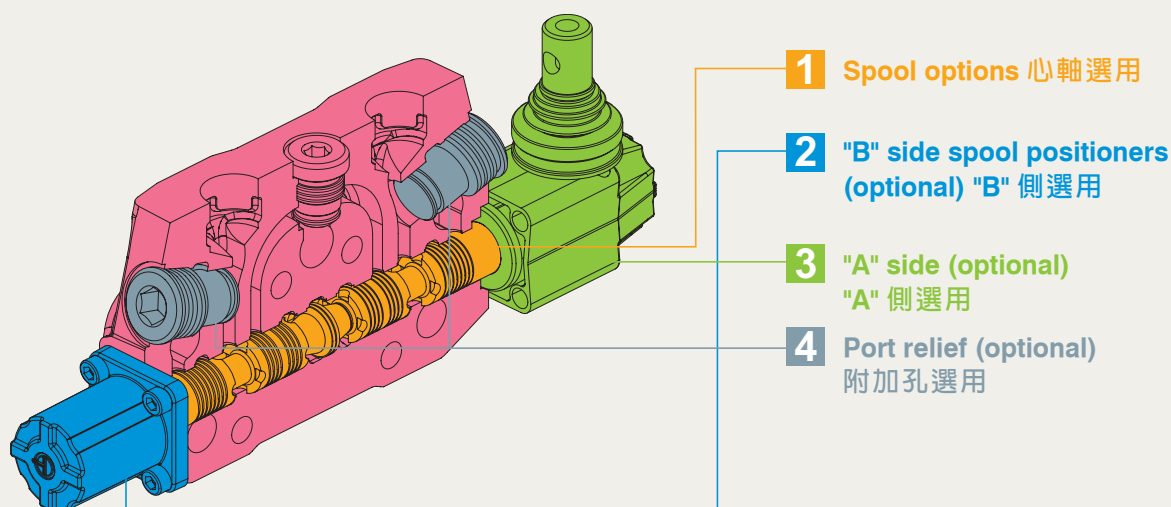
2: B Side Spool Positioners B 側

TYPE	CODE	DESCRIPTION	PAGE 頁數
MG (NC)	YLWSN638041	Microswitch with NC terminal 微動開關 (常閉)	P. 30
8	YLWSN63008	With spring return to neutral position 彈簧覆位	P. 31
8-1	YLWSN64081	2 positions, with spring centered from pos. 1 彈簧覆位, 0 & 1 兩位置切換	P. 31
8-2	YLWSN64082	2 positions, with spring centered from pos. 2 彈簧覆位, 0 & 2 兩位置切換	P. 31
9-1	YLWSN63091	Detent in pos. 1, 2 with spring centered 定位 0 & 1 & 2, 帶彈簧復位	P. 31
9-2	YLWSN63092	Detent in pos. 2 with spring centered 定位 2, 帶彈簧復位	P. 31
9-3	YLWSN63093	Detent in pos. 1 with spring centered 定位 1, 帶彈簧復位	P. 31
8ED3+RV-KE1R3	YLWSN63201	1S: ON/OFF Electro-Hydraulic control kit with pilot and drain line+backpressure valve (12/24 VDC) 一聯 ON / OFF 電液控制 (12/24VDC)	P. 28
8ED3+RV-KE2R3	YLWSN63202	2S: ON/OFF Electro-Hydraulic control kit with pilot and drain line+backpressure valve (12/24 VDC) 二聯 ON / OFF 電液控制 (12/24VDC)	P. 28
8ED3+RV-KE3R3	YLWSN63203	3S: ON/OFF Electro-Hydraulic control kit with pilot and drain line+backpressure valve (12/24 VDC) 三聯 ON / OFF 電液控制 (12/24VDC)	P. 28
8ED3+RV-KE4R3	YLWSN63204	4S: ON/OFF Electro-Hydraulic control kit with pilot and drain line+backpressure valve (12/24 VDC) 四聯 ON / OFF 電液控制 (12/24VDC)	P. 28
8ED3+RV-KE5R3	YLWSN63205	5S: ON/OFF Electro-Hydraulic control kit with pilot and drain line+backpressure valve (12/24 VDC) 五聯 ON / OFF 電液控制 (12/24VDC)	P. 28
8ED3+RV-KE6R3	YLWSN63206	6S: ON/OFF Electro-Hydraulic control kit with pilot and drain line+backpressure valve (12/24 VDC) 六聯 ON / OFF 電液控制 (12/24VDC)	P. 28
8ED3+RV-KE7R3	YLWSN63207	7S: ON/OFF Electro-Hydraulic control kit with pilot and drain line+backpressure valve (12/24 VDC) 七聯 ON / OFF 電液控制 (12/24VDC)	P. 28
8ED3+RV-KE8R3	YLWSN63208	8S: ON/OFF Electro-Hydraulic control kit with pilot and drain line+backpressure valve (12/24 VDC) 八聯 ON / OFF 電液控制 (12/24VDC)	P. 28
8ED3+RV-KE9R3	YLWSN63209	9S: ON/OFF Electro-Hydraulic control kit with pilot and drain line+backpressure valve (12/24 VDC) 九聯 ON / OFF 電液控制 (12/24VDC)	P. 28
8ED3+RV-KE10R3	YLWSN63210	10S: ON/OFF Electro-Hydraulic control kit with pilot and drain line+backpressure valve (12/24 VDC) 十聯 ON / OFF 電液控制 (12/24VDC)	P. 28
8ED3+RV-KE11R3	YLWSN63211	11S: ON/OFF Electro-Hydraulic control kit with pilot and drain line+backpressure valve (12/24 VDC) 十一聯 ON / OFF 電液控制 (12/24VDC)	P. 28
8ED3+RV-KE12R3	YLWSN63212	12S: ON/OFF Electro-Hydraulic control kit with pilot and drain line+backpressure valve (12/24 VDC) 十二聯 ON / OFF 電液控制 (12/24VDC)	P. 28
8ER3+KE1S0	YLWSN63401	1S: ON/OFF Electro-hydraulic control kit with collector kit for external pilot and drain 一聯 ON / OFF 電液控制, 需外接引導壓與回油	P. 29
8ER3+KE2S0	YLWSN63402	2S: ON/OFF Electro-hydraulic control kit with collector kit for external pilot and drain 二聯 ON / OFF 電液控制, 需外接引導壓與回油	P. 29
8ER3+KE3S0	YLWSN63403	3S: ON/OFF Electro-hydraulic control kit with collector kit for external pilot and drain 三聯 ON / OFF 電液控制, 需外接引導壓與回油	P. 29
8ER3+KE4S0	YLWSN63404	4S: ON/OFF Electro-hydraulic control kit with collector kit for external pilot and drain 四聯 ON / OFF 電液控制, 需外接引導壓與回油	P. 29
8ER3+KE5S0	YLWSN63405	5S: ON/OFF Electro-hydraulic control kit with collector kit for external pilot and drain 五聯 ON / OFF 電液控制, 需外接引導壓與回油	P. 29
8ER3+KE6S0	YLWSN63406	6S: ON/OFF Electro-hydraulic control kit with collector kit for external pilot and drain 六聯 ON / OFF 電液控制, 需外接引導壓與回油	P. 29
8ER3+KE7S0	YLWSN63407	7S: ON/OFF Electro-hydraulic control kit with collector kit for external pilot and drain 七聯 ON / OFF 電液控制, 需外接引導壓與回油	P. 29
8ER3+KE8S0	YLWSN63408	8S: ON/OFF Electro-hydraulic control kit with collector kit for external pilot and drain 八聯 ON / OFF 電液控制, 需外接引導壓與回油	P. 29
8ER3+KE9S0	YLWSN63409	9S: ON/OFF Electro-hydraulic control kit with collector kit for external pilot and drain 九聯 ON / OFF 電液控制, 需外接引導壓與回油	P. 29
8ER3+KE10S0	YLWSN63410	10S: ON/OFF Electro-hydraulic control kit with collector kit for external pilot and drain 十聯 ON / OFF 電液控制, 需外接引導壓與回油	P. 29
8ER3+KE11S0	YLWSN63411	11S: ON/OFF Electro-hydraulic control kit with collector kit for external pilot and drain 十一聯 ON / OFF 電液控制, 需外接引導壓與回油	P. 29
8ER3+KE12S0	YLWSN63412	12S: ON/OFF Electro-hydraulic control kit with collector kit for external pilot and drain 十二聯 ON / OFF 電液控制, 需外接引導壓與回油	P. 29

SN-6 Working Section 工作體

Sectional Directional Control Valves 片式控制閥

EW SN-6 / 1S / **1 8 L** / P1(G3-100) / G-6
 1 2 3 4



- 1** Spool options 心軸選用
- 2** "B" side spool positioners (optional) "B" 側選用
- 3** "A" side (optional) "A" 側選用
- 4** Port relief (optional) 附加孔選用

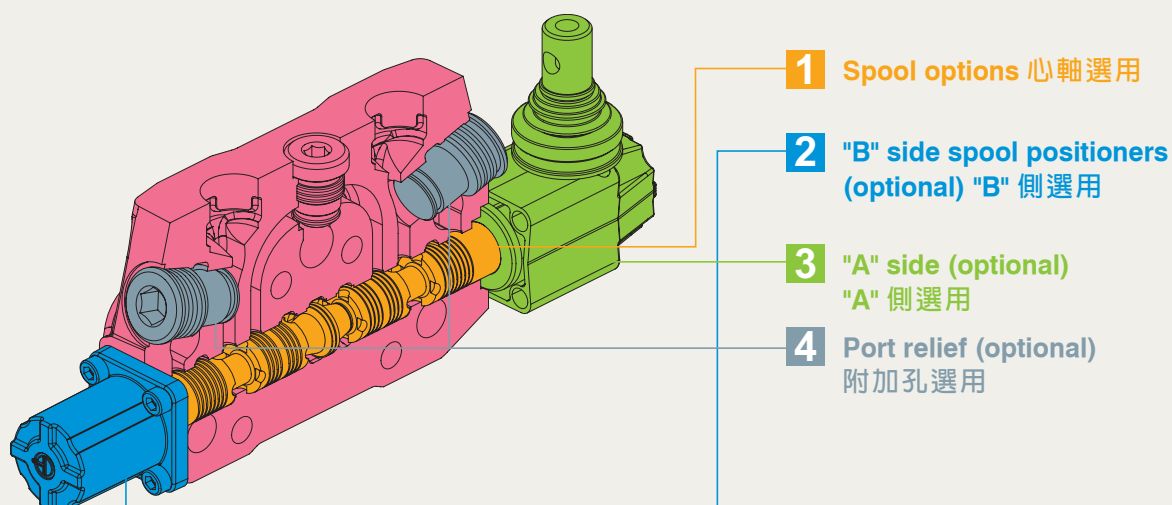
3: A Side (Optional) A 側

TYPE 型式	CODE 編號	DESCRIPTION 說明	PAGE 頁數
L	YLWSN64000	Standard lever 標準手柄控制製配件	P. 21
SLP	YLWSN64001	Without lever, with dust proof plate 防塵蓋控制製配件	P. 21
LCB	YLWSN64002	Joystick lever for 2 section operation 手柄控制製配件(兩軸)	P. 22
TQ	YLWSN64003	Flexible cable connection 纜線控制製配件	P. 23

SN-6 Working Section 工作體

Sectional Directional Control Valves 片式控制閥

EW SN-6 / 1S / **1 8 L** / **P1(G3-100)** / G-6
1 2 3 4

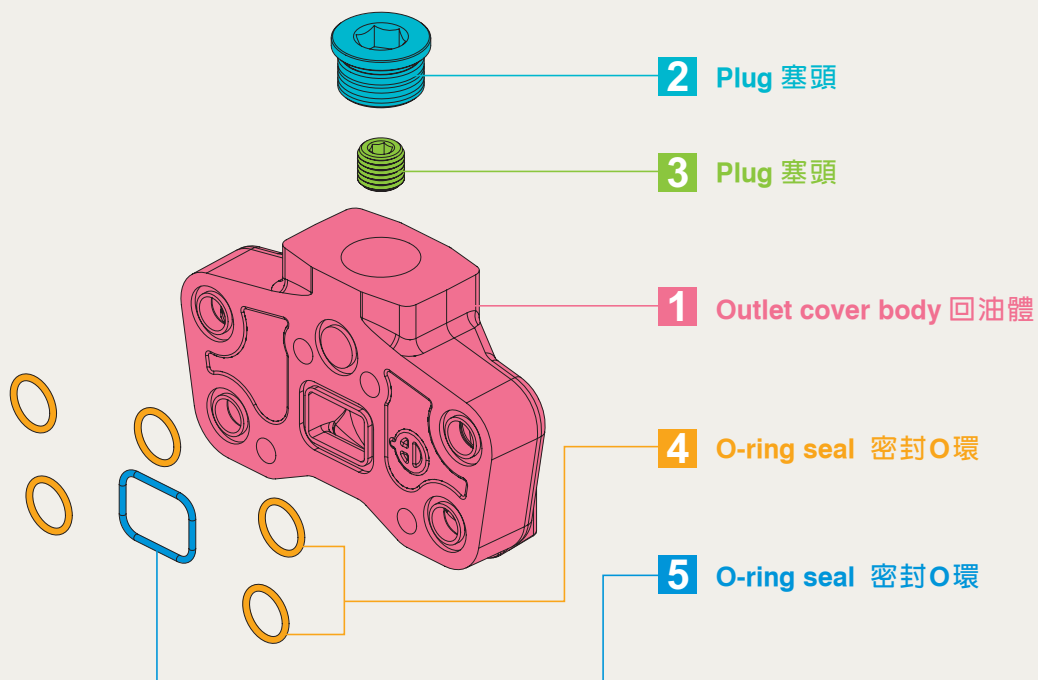


4: Port Relief (Optional) 附加口			
TYPE 型式	CODE 編號	DESCRIPTION 說明	PAGE 頁數
P (G2-63)	YLWSN65002	Anti-shock valve, range 63 to 125 bar / form 900 to 1800 psi standard setting 63 bar / 900 psi 溢流閥, 工作範圍 63-125 bar / 900-1800 psi, 標準設定 63 bar / 900 psi	P. 33
P (G3-100)	YLWSN65003	Anti-shock valve, range 100 to 250 bar / form 1450 to 3600 psi standard setting 100bar / 1450 psi 溢流閥, 工作範圍 100-250 bar / 1450-3600 psi, 標準設定 100 bar / 1450 psi	P. 33
P (G4-200)	YLWSN65004	Anti-shock valve, range 200 to 315 bar / form 2900 to 4600 psi standard setting 200 bar / 2900 psi 溢流閥, 工作範圍 200-315 bar / 2900-4600 psi, 標準設定 200 bar / 2900 psi	P. 33
U (G2-63)	YLWSN65012	Anti-shock valve and Anti-cavitation valve, range 63 to 125 bar / form 900 to 1800 psi standard setting 63 bar / 900 psi 緩衝閥, 工作範圍 63-125 bar / 900-1800 psi, 標準設定 63 bar / 900 psi	P. 33
U (G3-100)	YLWSN65013	Anti-shock valve and Anti-cavitation valve, range 100 to 250 bar / form 1450 to 3600 psi standard setting 100 bar / 1450 psi 緩衝閥, 工作範圍 100-250 bar / 1450-3600 psi, 標準設定 100 bar / 1450 psi	P. 33
U (G4-200)	YLWSN65014	Anti-shock valve and Anti-cavitation valve, range 200 to 315 bar / form 2900 to 4600 psi standard setting 200 bar / 2900 psi 緩衝閥, 工作範圍 200-315 bar / 2900-4600 psi, 標準設定 200bar / 2900 psi	P. 33
C	YLWSN65100	Anti - cavitation valve 補油閥	P. 33
XU	YLWSN85015	Pilot operated Anti-shock valve and Anti-cavitation valve 引導式緩衝閥	P. 33

SN-6 Outlet Section 出口體

Sectional Directional Control Valves 片式控制閥

FT SN-6 / G-8 / M3

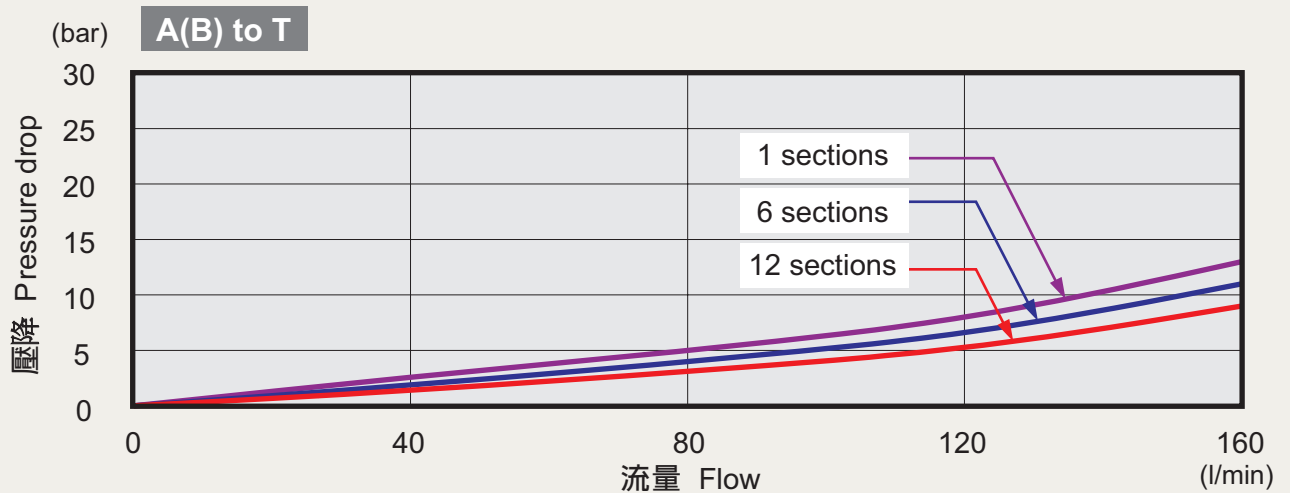
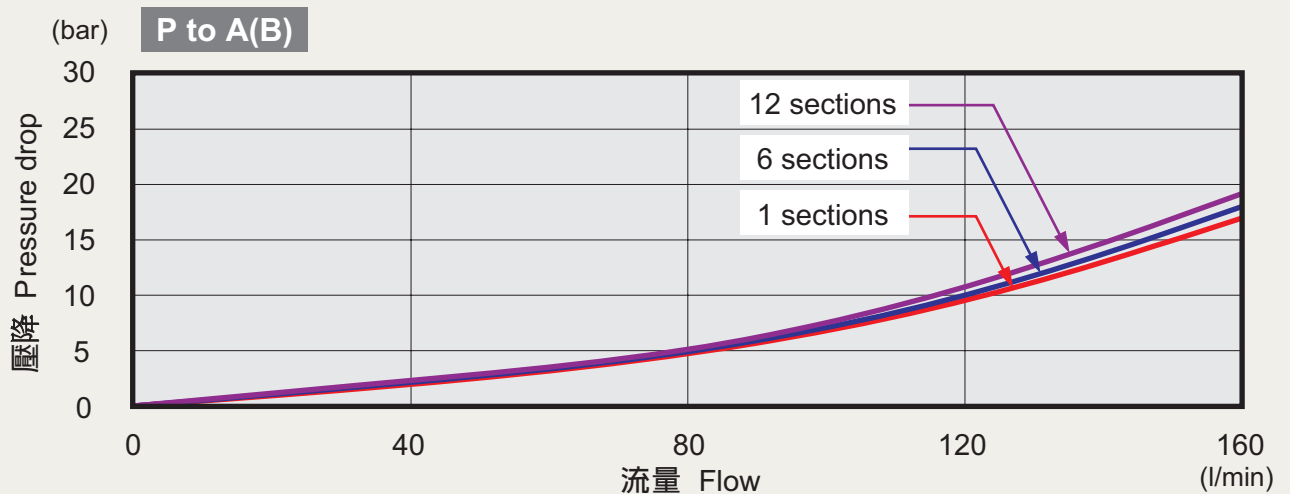
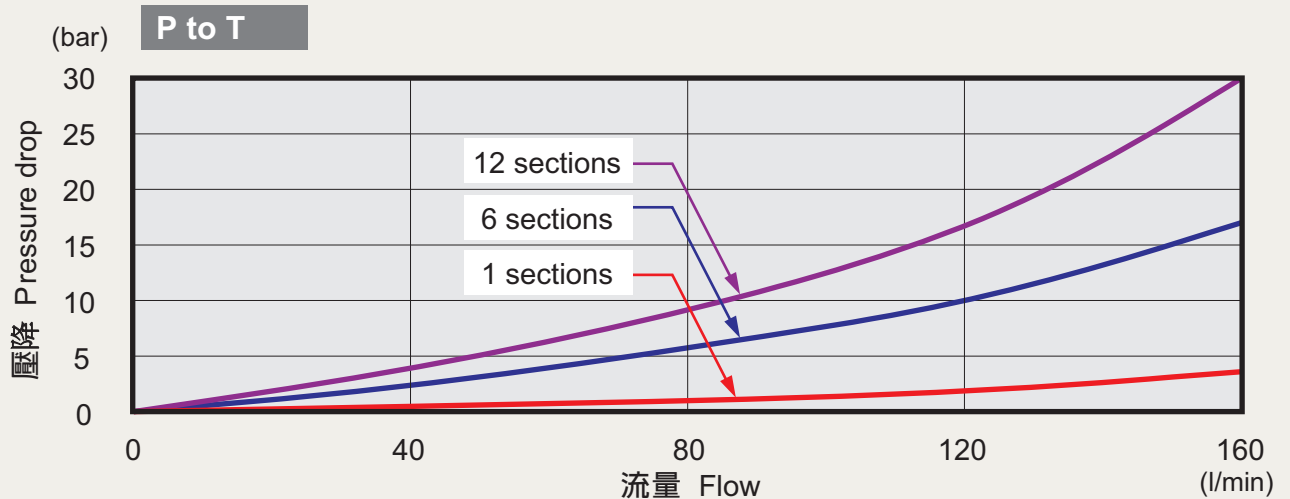


Outlet section 出口端		
NO.	NAME OF PARTS 品名	Q
1	Outlet cover body 回油體	1
2	Plug 塞頭	1
3	M18 x 1.5 Plug M18 塞頭	1

Outlet section 出口端		
NO.	NAME OF PARTS 品名	Q
4	O-ring seal (18.72 x 2.62 NBR 70 SH) 密封O環	5
5	O-ring seal (34.59 x 2.62 NBR 70 SH) 密封O環	1

SN-6 Performance Curve Chart 性能曲線圖

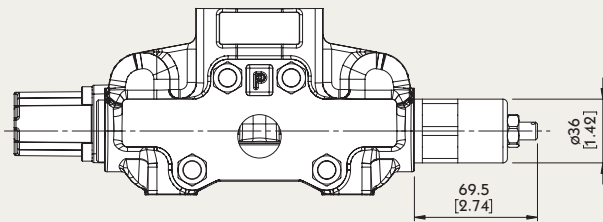
Sectional Directional Control Valves 片式控制閥



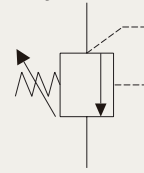
SN-6 Inlet Relief (Optional) 入口端

Sectional Directional Control Valves 片式控制閥

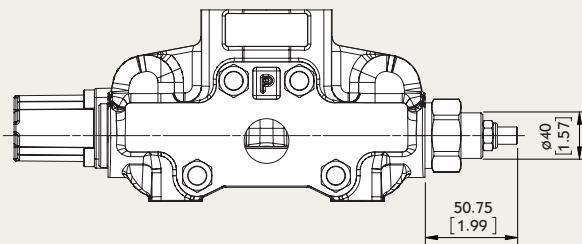
Type FG



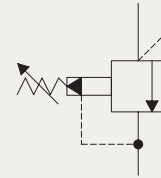
Direct pressure relief valve:
直動式溢壓閥



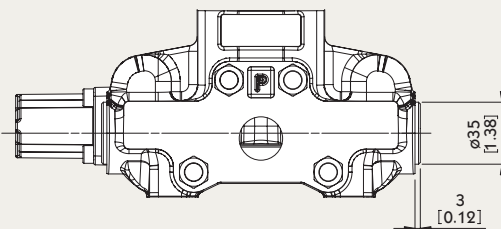
Type XFG



Pilot operated pressure relief valve
引導式溢流閥



Type SV



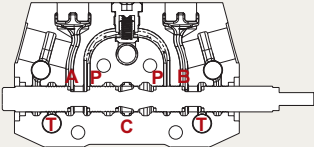
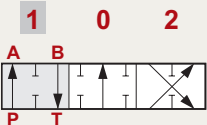
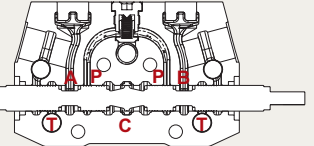
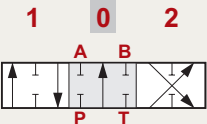
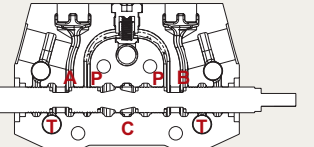
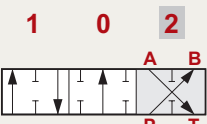
Relief valve blanking plug
塞頭



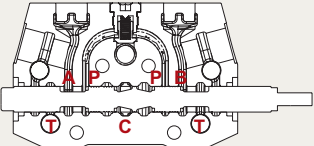
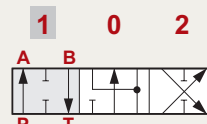
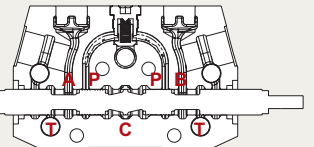
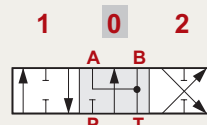
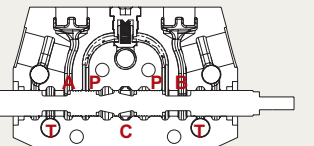
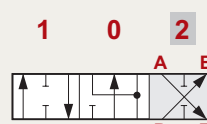
SN-6 spool Options 心軸

Sectional Directional Control Valves 片式控制閥

TYPE 1

	<p>P → A B → T C closed</p>	
	<p>P & A & B & T closed C open</p>	
	<p>P → B A → T C closed</p>	

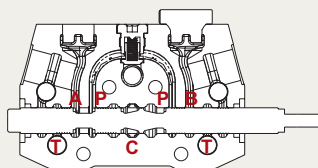
TYPE 2

	<p>P → A B → T C closed</p>	
	<p>A & B → T P closed C open</p>	
	<p>P → B A → T C closed</p>	

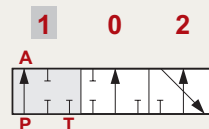
SN-6 spool Options 心軸

Sectional Directional Control Valves 片式控制閥

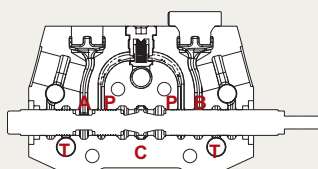
TYPE 3



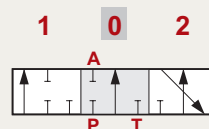
P → A
T & C closed



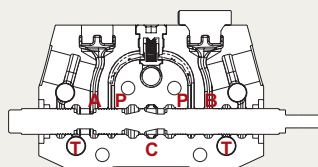
"B" port plugged "B" 孔無作動



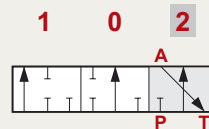
P & A & T closed
C open



"B" port plugged "B" 孔無作動

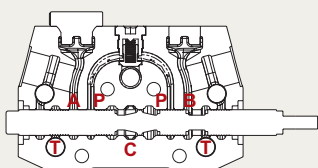


A → T
P closed
C open

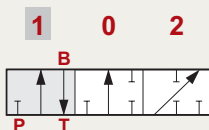


"B" port plugged "B" 孔無作動

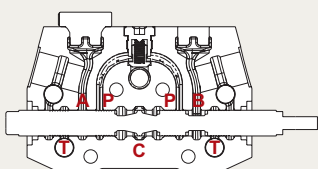
TYPE 4



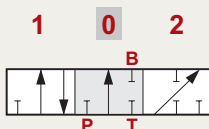
B → T
P closed
C open



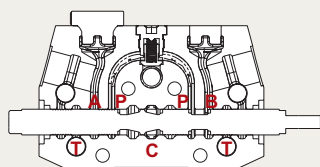
"A" port plugged "A" 孔無作動



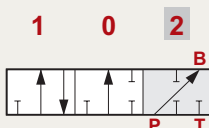
P & B & T closed
C open



"A" port plugged "A" 孔無作動



P → B
T & C closed

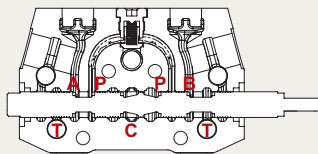


"A" port plugged "A" 孔無作動

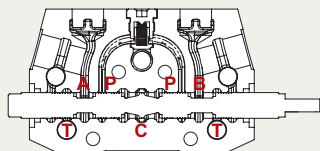
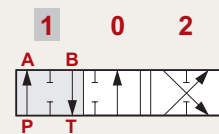
SN-6 spool Options 心軸

Sectional Directional Control Valves 片式控制閥

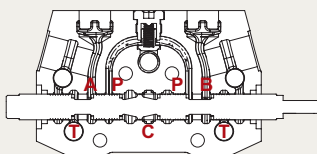
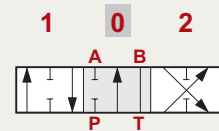
TYPE 5



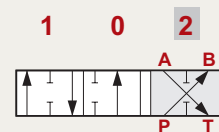
P → A
B → T
C closed



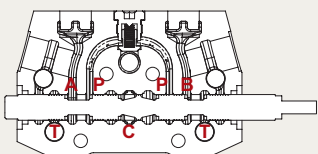
B → T
P & A closed
C open



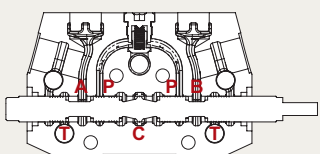
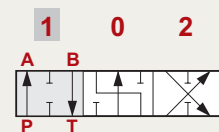
P → B
A → T
C closed



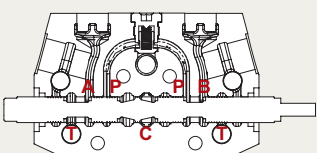
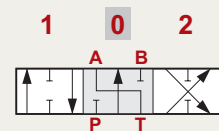
TYPE 6



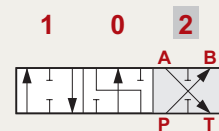
P → A
B → T
C closed



A → T
P & B closed
C open



P → B
A → T
C closed

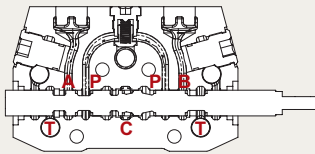


SN-6 spool Options 心軸

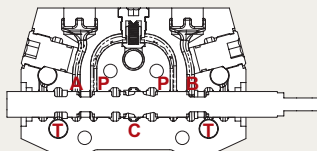
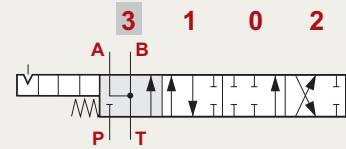
Sectional Directional Control Valves 片式控制閥

TYPE 5PY

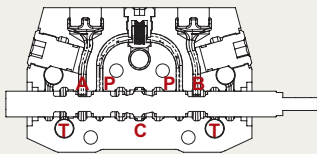
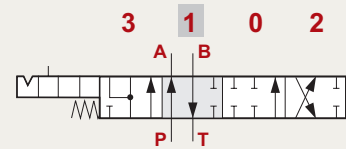
NOTE : WITH SPECIAL BODY AND SPECIAL POSITIONER.
注意：需使用特殊本體與定位配件



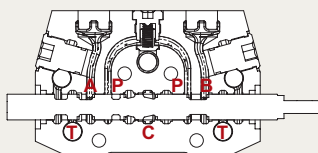
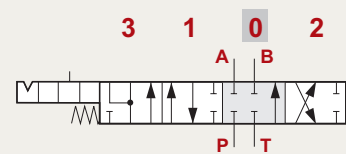
A & B → T
P closed
C open



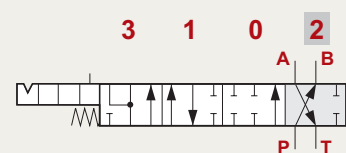
P → A
B → T
C closed



P & T & A & B closed
C open



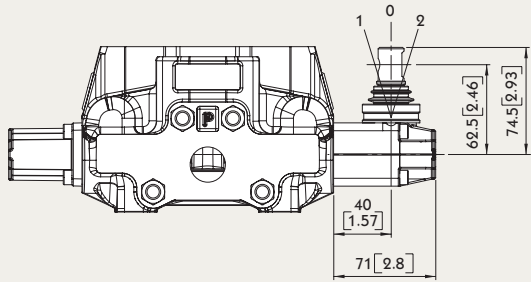
P → B
A → T
C closed



SN-6 A Side A 側

Sectional Directional Control Valves 片式控制閥

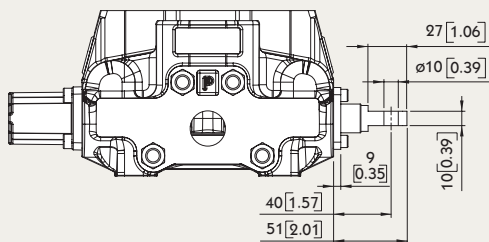
Type L



Type L:

STANDART LEVER KIT
標準手柄控制配件

Type SLP



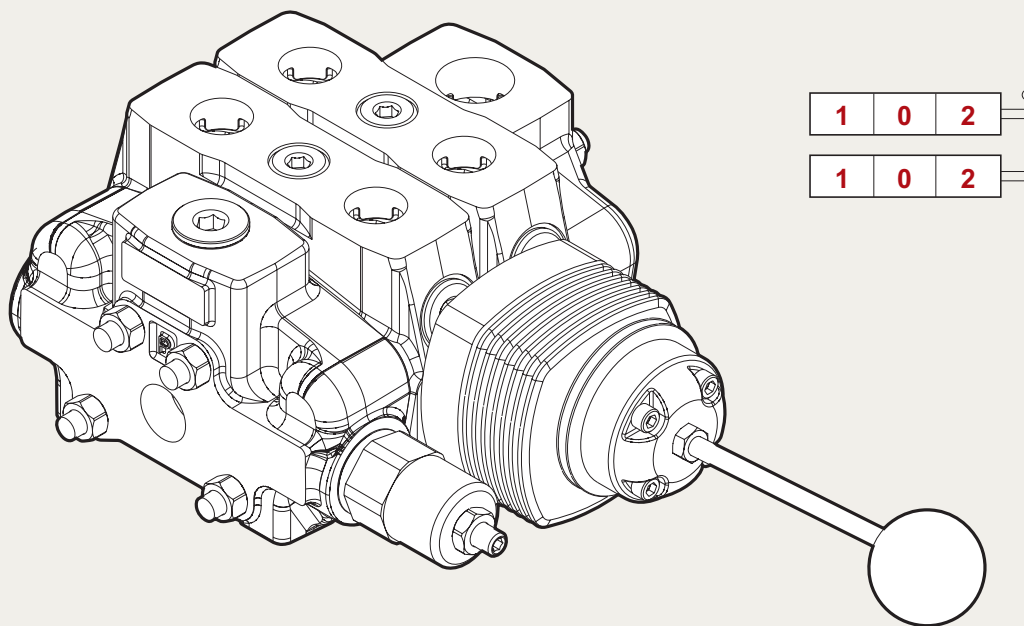
Type SLP:

WITH DUST-PROOF PLATE
防塵蓋控制配件

SN-6 A Side A 側

Sectional Directional Control Valves 片式控制閥

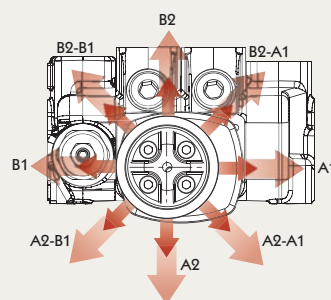
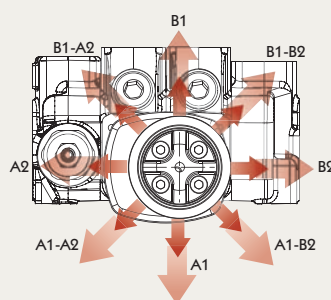
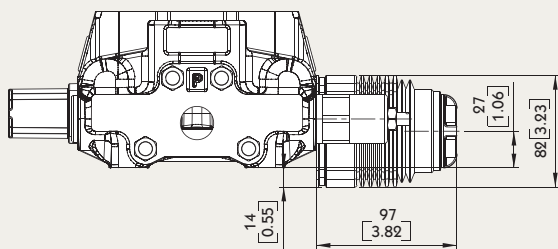
LCB: Joystick control 手柄控制配件 (兩軸)



Type LCB

LCB1

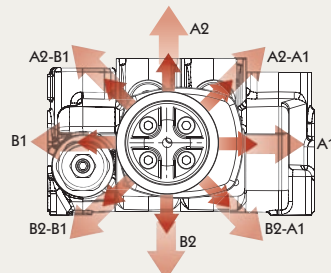
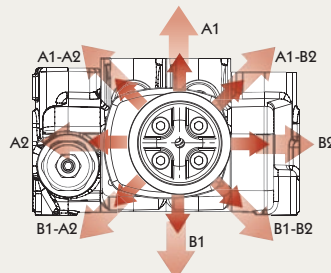
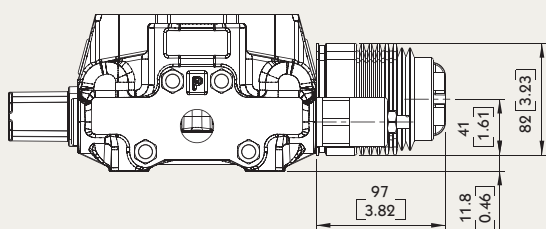
LCB2



Type LCB

LCB3

LCB4

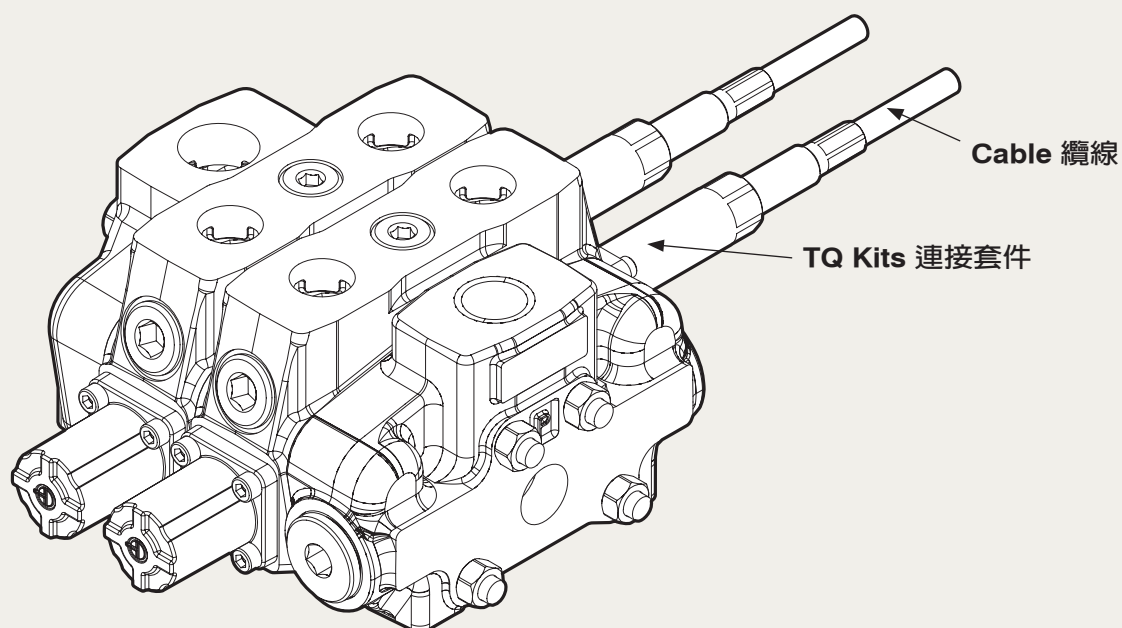


SN-6 A Side A 側

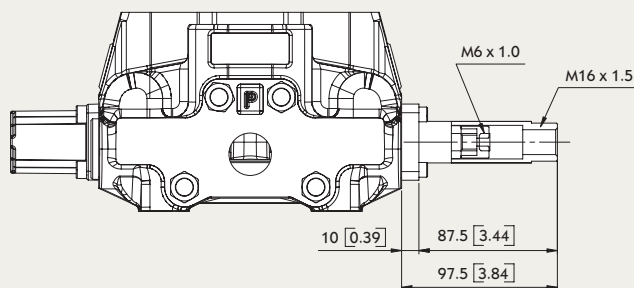
Sectional Directional Control Valves 片式控制閥

NOTE : CONNECTION KIT NOT INCLUDE

連接套件不包括纜線



Type TQ

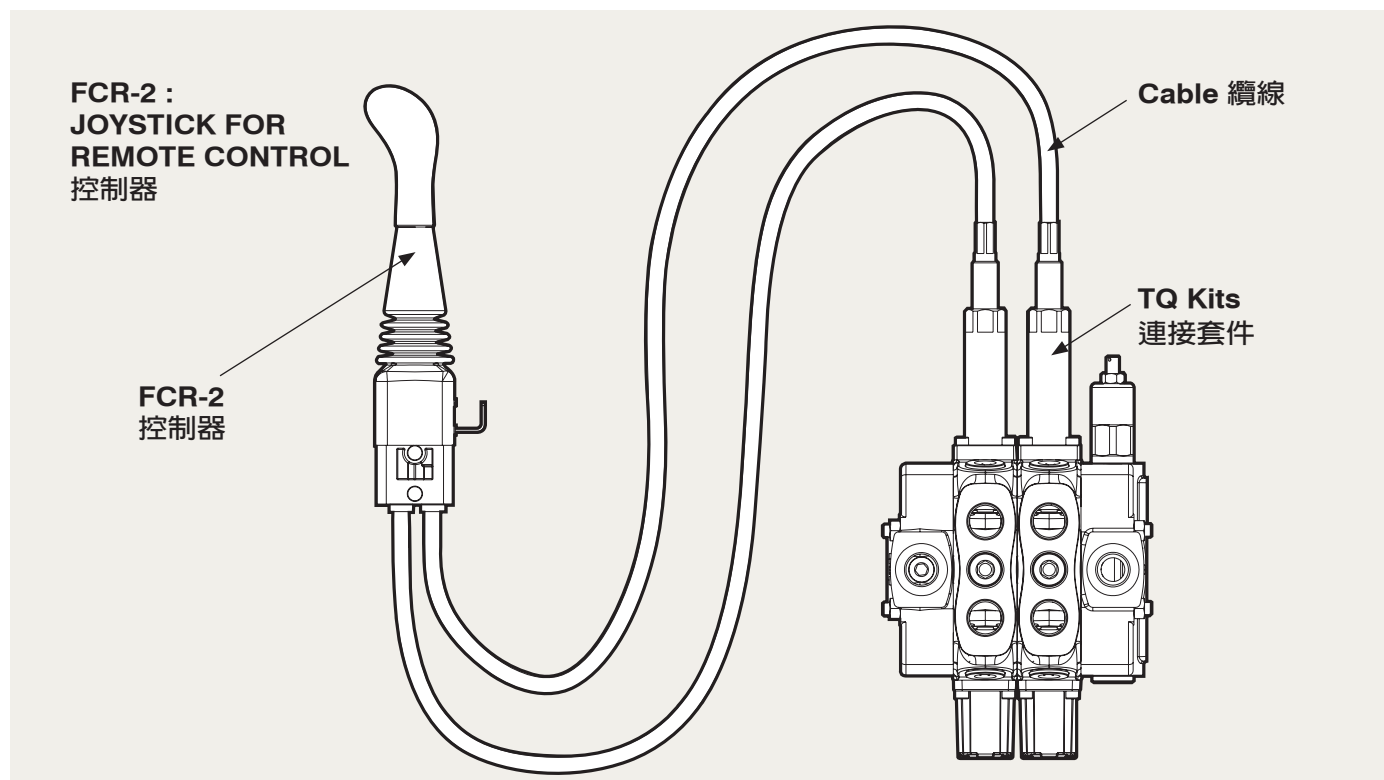


TQ Kit:

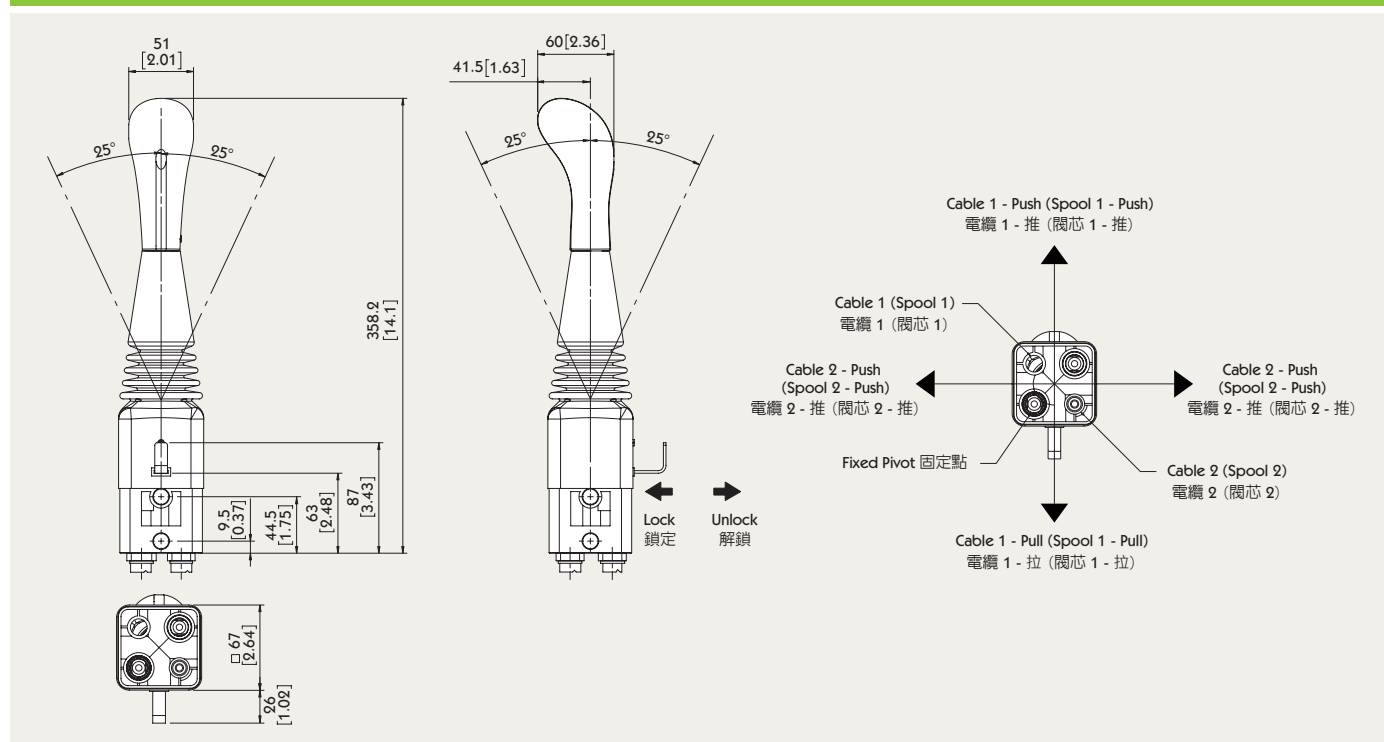


SN-6 A Side A 側

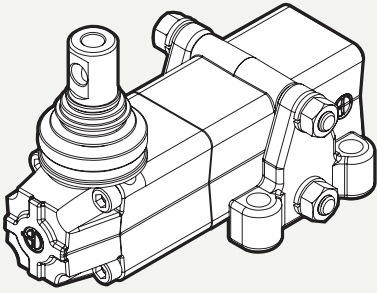
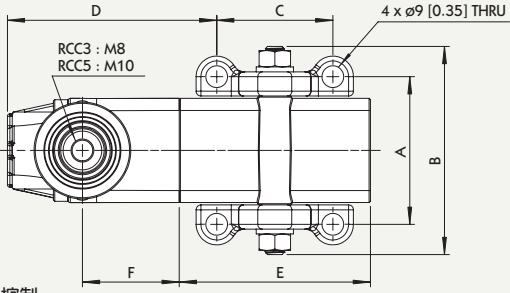
Sectional Directional Control Valves 片式控制閥



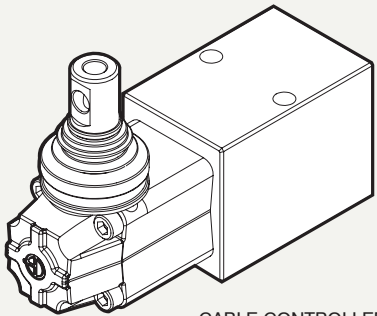
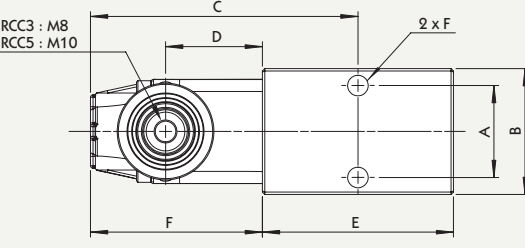
Type FCR-2



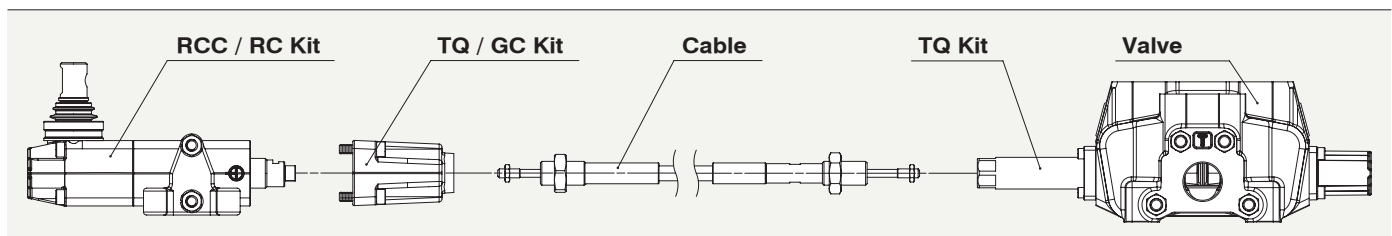
SN-6 Flexible Cable Remote Controls (One Section Operation) 纜線遠程控制器 Sectional Directional Control Valves 片式控制閥

Type RCC		RCC Available sections from 1 to 7 可使用聯數 1~7														Product 產品		Code 編號	
 <p>CABLE CONTROLLER 纜線控制</p>																MB2	RCC-3		
																MB3	RCC-3		
																MB4	RCC-3		
																MB5	RCC-5		
																MSB3	RCC-3		
																MSB5	RCC-5		
																SN3	RCC-3		
																SN4	RCC-5		
SN6	RCC-5																		
SN8	RCC-5																		

TYPE	RCC5/1		RCC5/2		RCC5/3		RCC5/4		RCC5/5		RCC5/6		RCC5/7		RCC3/1		RCC3/2		RCC3/3		RCC3/4		RCC3/5		RCC3/6		RCC3/7			
	mm	in	mm	in	mm	in	mm	in	mm	in	mm	in	mm	in	mm	in	mm	in	mm	in	mm	in	mm	in	mm	in	mm	in		
A	61	2.4	106	4.17	151	5.94	196	7.72	241	9.49	286	11.26	331	13.03	56	2.20	96	3.78	136	5.35	176	6.93	216	8.50	256	10.08	296	11.65		
B	86	3.39	131	5.16	176	6.93	221	8.7	266	10.47	311	12.24	356	14.02	73	2.87	113	4.45	153	6.02	193	7.60	233	9.17	273	10.74	313	12.32		
C	48	1.89	48	1.89	48	1.89	48	1.89	48	1.89	48	1.89	48	1.89	40	1.57	40	1.57	40	1.57	40	1.57	40	1.57	40	1.57	40	1.57	40	1.57
D	86.5	3.41	86.5	3.41	86.5	3.41	86.5	3.41	86.5	3.41	86.5	3.41	86.5	3.41	58.5	2.3	58.5	2.3	58.5	2.3	58.5	2.3	58.5	2.3	58.5	2.3	58.5	2.3	58.5	2.3
E	79	3.11	79	3.11	79	3.11	79	3.11	79	3.11	79	3.11	79	3.11	45	1.77	45	1.77	45	1.77	45	1.77	45	1.77	45	1.77	45	1.77	45	1.77
F	40	1.57	40	1.57	40	1.57	40	1.57	40	1.57	40	1.57	40	1.57	30	1.18	30	1.18	30	1.18	30	1.18	30	1.18	30	1.18	30	1.18	30	1.18

Type RC		RC Available sections from 1 to 4 可使用聯數 1~4														Product 產品		Code 編號	
 <p>CABLE CONTROLLER 纜線控制</p>																MB2	RC-3		
																MB3	RC-3		
																MB4	RC-3		
																MB5	RC-5		
																MSB3	RC-3		
																MSB5	RC-5		
																SN3	RC-3		
																SN4	RC-5		
SN6	RC-5																		
SN8	RC-5																		

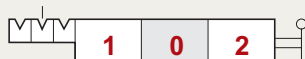
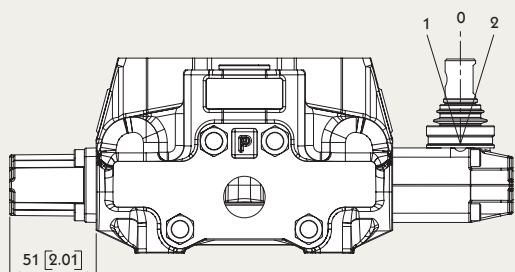
TYPE	RC5/1		RC5/2		RC5/3		RC5/4		RC3/1		RC3/2		RC3/3		RC3/4	
	mm	in	mm	in	mm	in	mm	in	mm	in	mm	in	mm	in	mm	in
A	38	1.50	85	3.35	130	5.12	175	6.89	33.5	1.32	74	2.91	112	4.41	150	5.91
B	52	2.04	97	3.82	142	5.59	187	7.36	45	1.77	86	3.39	124	4.88	162	6.38
C	110.5	4.35	110.5	4.35	110.5	4.35	110.5	4.35	78.5	3.09	78.5	3.09	78.5	3.09	78.5	3.09
D	40	1.57	40	1.57	40	1.57	40	1.57	30	1.18	30	1.18	30	1.18	30	1.18
E	79	3.11	79	3.11	79	3.11	79	3.11	45	1.77	45	1.77	45	1.77	45	1.77
F	71	2.80	71	2.80	71	2.80	71	2.80	56	2.21	56	2.21	56	2.21	56	2.21



SN-6 B Side B 側

Sectional Directional Control Valves 片式控制閥

Type 6



6-1 Kit:

DETENT IN POS. 1-0-2, WITHOUT SPRING CENTERED

定位 1 & 0 & 2，不帶彈簧覆位



6-2 Kit:

2 POSITIONS, DETENT IN POS. 0-2, WITHOUT SPRING CENTERED

定位 0 & 2，不帶彈簧覆位

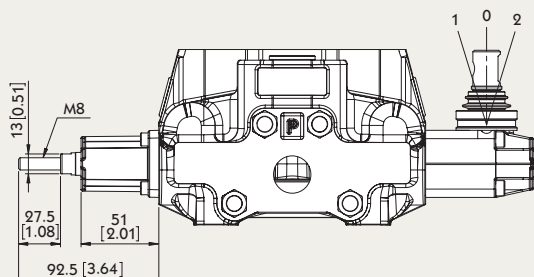


6-3 Kit:

2 POSITIONS, DETENT IN POS. 1-0, WITHOUT SPRING CENTERED

定位 1 & 0，不帶彈簧覆位

Type 8D2



8D2 Kit:

WITH SPRING RETURN TO NEUTRAL POSITION AND PIN WITH M8 MALE THREAD FOR DUAL CONTROL

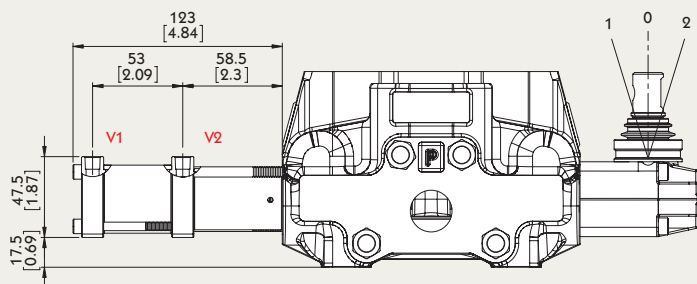
彈簧覆位，帶 M8 轉接螺紋

SN-6 B Side B 側

Sectional Directional Control Valves 片式控制閥

Type 8P

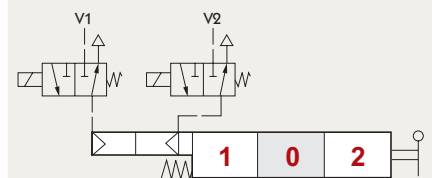
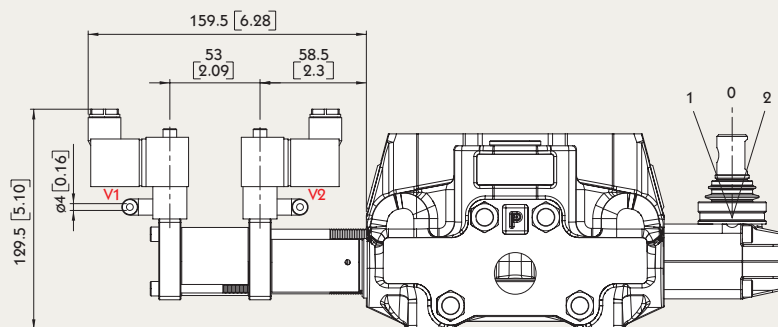
V1 & V2 : NPT 1/8 - 27



Pilot pressure : FROM 7 TO 10 BAR / 101 TO 145 PSI

引導壓力 : 7 - 10 BAR / 101 - 145 PSI

Type 8EP3



Solenoid operating features 線圈操作數據 :

NOMINAL VOLTAGE 額定電壓 : 24VDC

NOMINAL VOLTAGE TOLERANCE 額定誤差值 : ±10%

POWER RATING 功率 : 5W

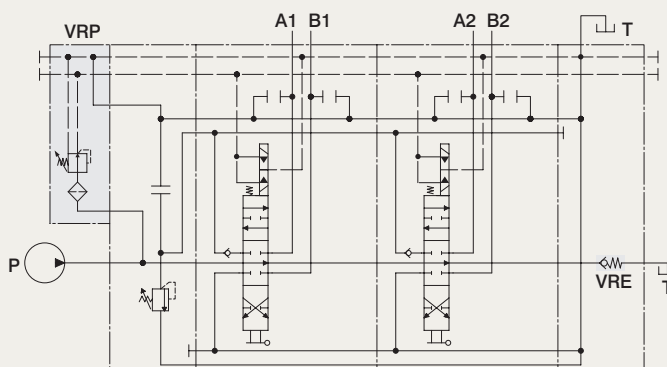
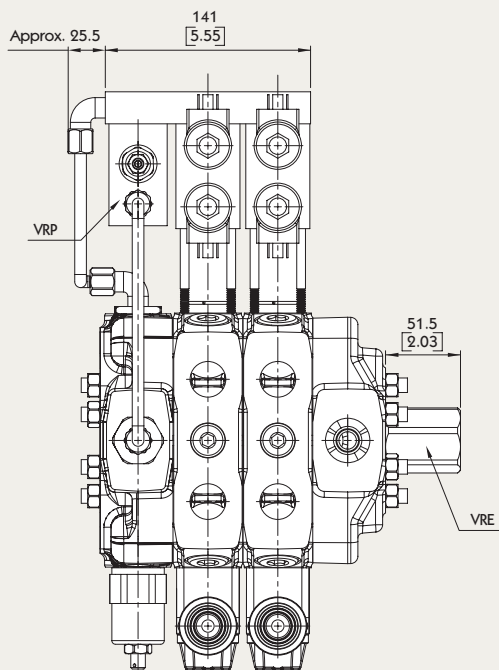
Pilot pressure : FROM 7 TO 10 BAR / 101 TO 145 PSI

引導壓力 : 7 - 10 BAR / 101 - 145 PSI

SN-6 B Side B 側

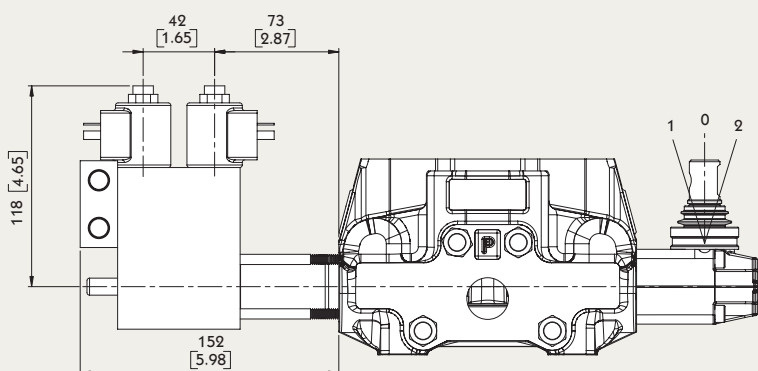
Sectional Directional Control Valves 片式控制閥

Type 8ED3



VRP valve operating features VRP 減壓閥操作數據：

OUTLET PRESSURE 出口壓力: 25 BAR / 363 PSI
 MAX. FLOW 最大流量: 8 L/MIN / 2.1 US GPM
 FILTERING 過濾: 80 μ

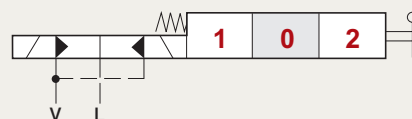


Operating features 操作數據：

PILOT PRESSURE 引導壓：
 • MIN. 最小: 10 BAR / 145 PSI
 • MAX. 最大: 50 BAR / 725 PSI
 MAX. BACKPRESSURE ON DRAIN L
 L最大回油背壓: 25 BAR / 360PSI

Solenoid operating features 線圈操作數據：

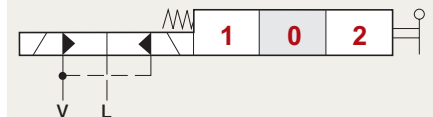
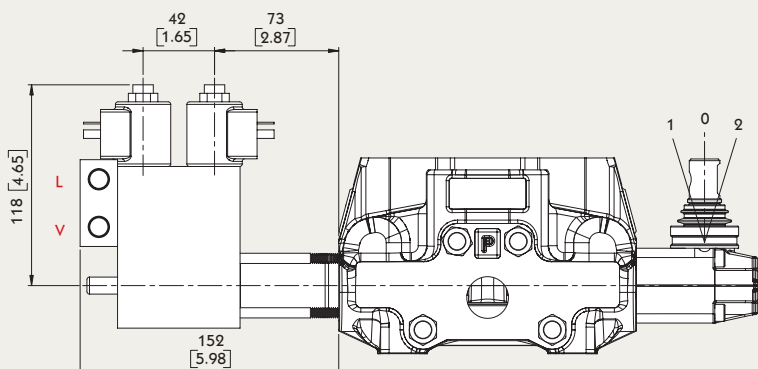
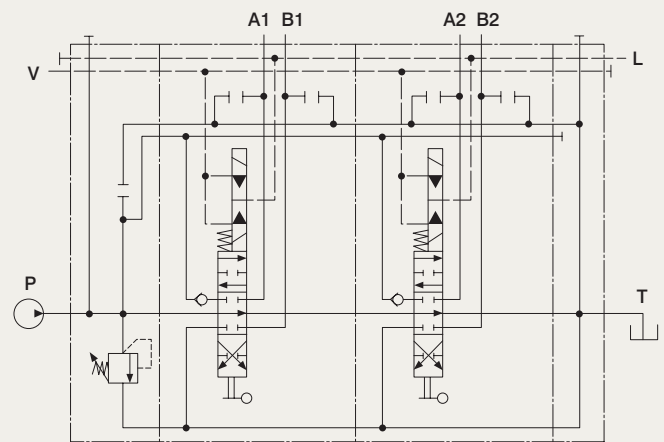
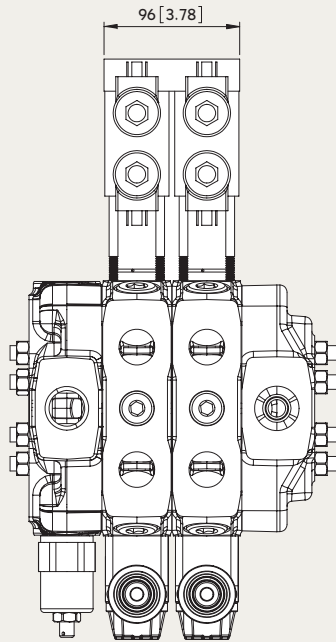
NOMINAL VOLTAGE 額定電壓:
 12VDC / 24 VDC
 POWER RATING 功率: 21 W
 DUTY CYCLE 工作週期: 100 %



SN-6 B Side B 側

Sectional Directional Control Valves 片式控制閥

Type 8ER3



Operating features 操作數據 :

- PILOT PRESSURE 引導壓:
- MIN. 最小: 10 BAR / 145 PSI
 - MAX. 最大: 50 BAR / 725 PSI
- MAX. BACKPRESSURE ON DRAIN L
L最大回油背壓: 25 BAR / 360PSI

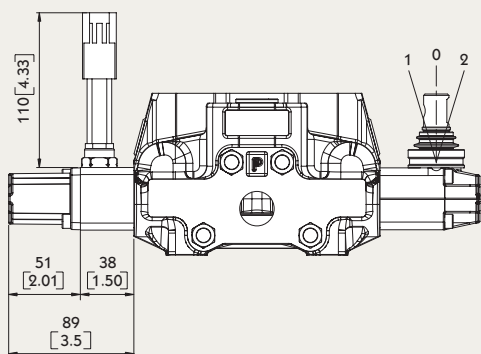
Solenoid operating features 線圈操作數據 :

- NOMINAL VOLTAGE 額定電壓:
12VDC / 24 VDC
- POWER RATING 功率: 21 W
DUTY CYCLE 工作週期: 100 %

SN-6 B Side B 側

Sectional Directional Control Valves 片式控制閥

Type 8MG



MICROSWITCH

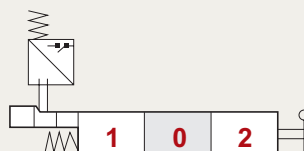
Operating features 操作數據：

MECHANICAL LIFE 機構壽命：

- 5 x 10⁶ OPERATIONS 500000 作動

ELECTRICAL LIFE (RESISTIVE LOAD) 電控壽命：

- 10⁶ OPERATIONS 500000 作動 - 7A / 13.5 VDC
- 5 x 10⁶ OPERATIONS 50000 作動 - 10A / 12 VDC
- 5 x 10⁶ OPERATIONS 50000 作動 - 3A / 28 VDC



8MG1 Kit:

MICROSWITCH WITH MALE/FEMALE CONNECTOR, OPERATED IN POS. 1
微動開關 (常開) · 作用位置 1



8MG2 Kit:

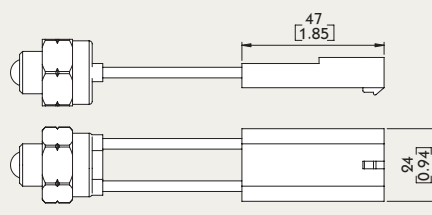
MICROSWITCH WITH MALE/FEMALE CONNECTOR, OPERATED IN POS. 2
微動開關 (常開) · 作用位置 2



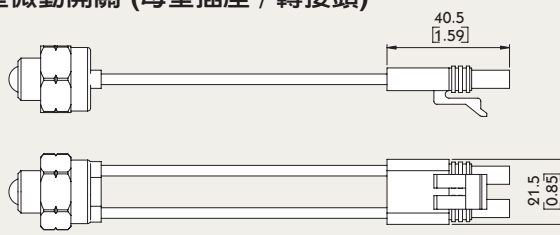
8MG3 Kit:

MICROSWITCH WITH MALE/FEMALE CONNECTOR, OPERATED IN POS. 1 AND POS. 2
微動開關 (常開) · 作用位置 1 & 2

With NO contact (female connector with male end) 常開型微動開關 (公型插座 / 轉接頭)



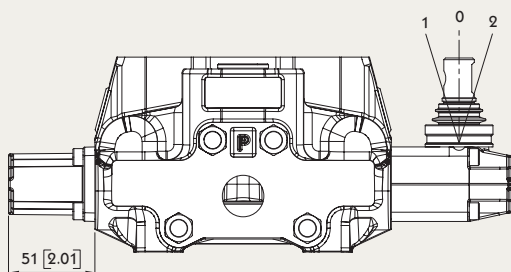
With NC contact (male connector with female end) 常閉型微動開關 (母型插座 / 轉接頭)



SN-6 B Side B 側

Sectional Directional Control Valves 片式控制閥

Type 8



8 Kit:

SPRING RETURN TO NEUTRAL POSITION

彈簧覆位



8-1 Kit:

SPRING RETURN TO NEUTRAL POSITION. (2 POSITIONS)

彈簧覆位 0 & 1 兩位置切換

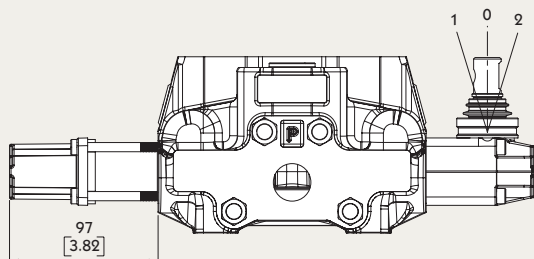


8-2 Kit:

SPRING RETURN TO NEUTRAL POSITION. (2 POSITIONS)

彈簧覆位 0 & 2 兩位置切換

Type 9



9-1 Kit:

DETENT IN POS. 0, 1, 2 WITH SPRING CENTERED

定位 0 & 1 & 2, 帶彈簧覆位



9-2 Kit:

DETENT IN POS. 2 WITH SPRING CENTERED

定位 2, 帶彈簧覆位



9-3 Kit:

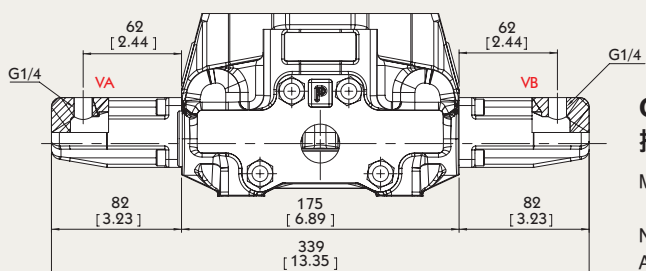
DETENT IN POS. 1 WITH SPRING CENTERED

定位 1, 帶彈簧覆位

SN-6 B Side B 側

Sectional Directional Control Valves 片式控制閥

Type 8IM



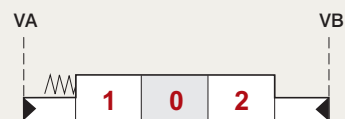
Operating features

操作數據：

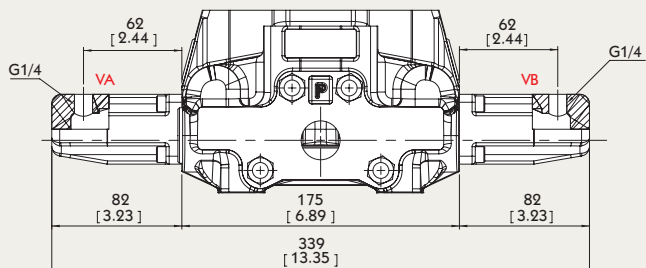
MAX. 最大: 50 BAR / 730 PSI

NOTE: WITH STANDARD SPOOL AND SPRING

使用標準心軸與標準彈簧



Type 8IMM



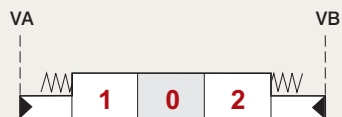
Operating features

操作數據：

MAX. 最大: 50 BAR / 730 PSI

NOTE: WITH SPECIAL SPOOL AND SPRING

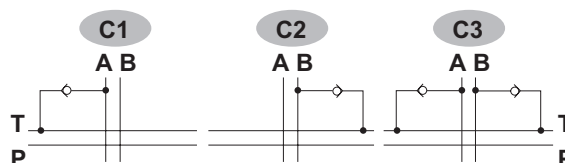
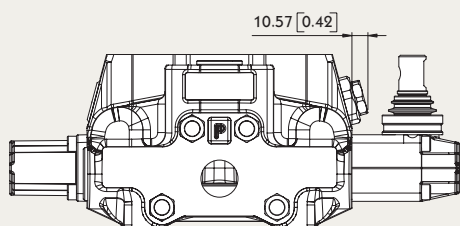
使用專用心軸與專用彈簧



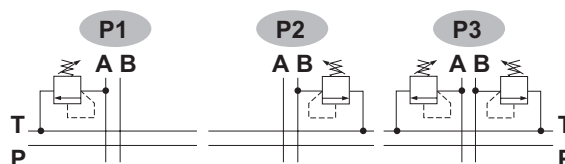
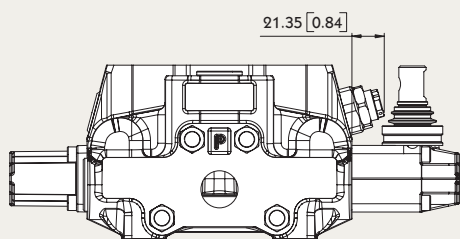
SN-6 Port Relief 附加口

Sectional Directional Control Valves 片式控制閥

TYPE C Anti-cavitation valve 補油閥

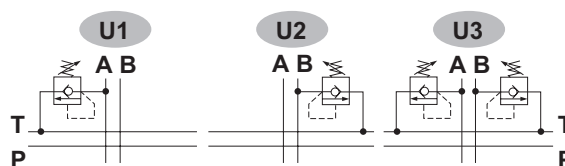
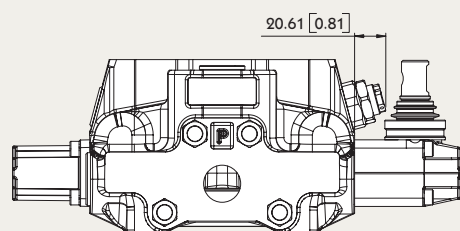


TYPE P Anti-shock valve 溢流閥



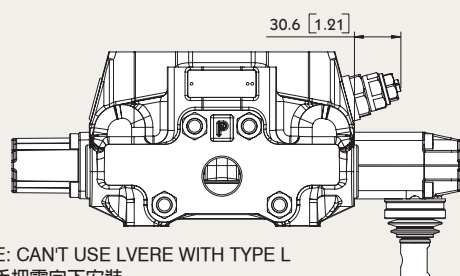
G2: 63-125 bar G3: 100-250 bar G4: 200-315 bar

TYPE U Anti-shock valve and anti-cavitation valve 緩衝閥

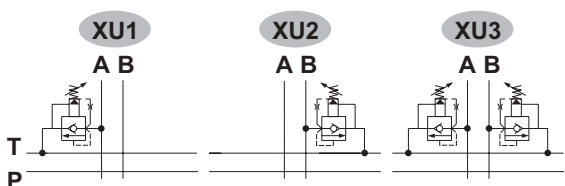


G2: 63-125 bar G3: 100-250 bar G4: 200-315 bar

TYPE XU Pilot operated anti-shock valve and anti-cavitation valve 引導式緩衝閥



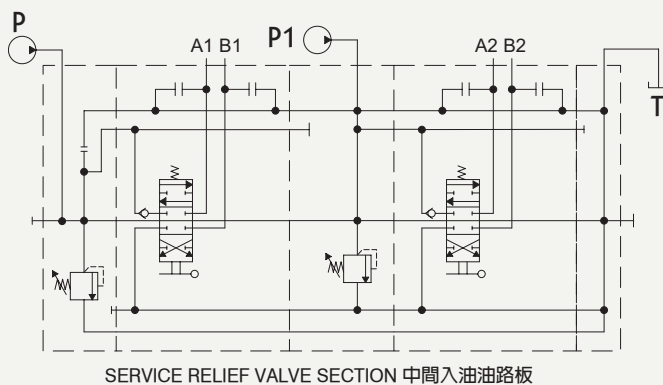
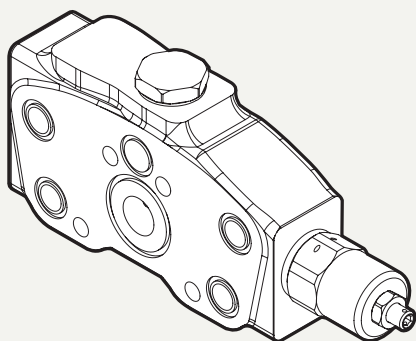
NOTE: CAN'T USE LVERE WITH TYPE L
控制手把需向下安裝



SN-6 Intermediate Block Valve For Sectional Type 片式閥塊配件

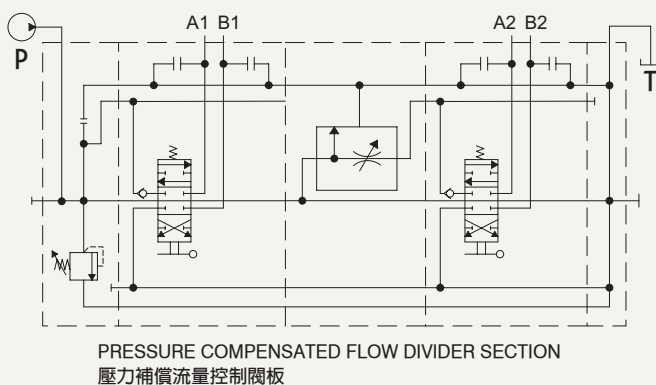
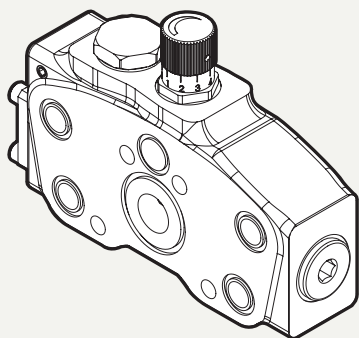
Sectional Directional Control Valves 片式控制閥

Type EGI

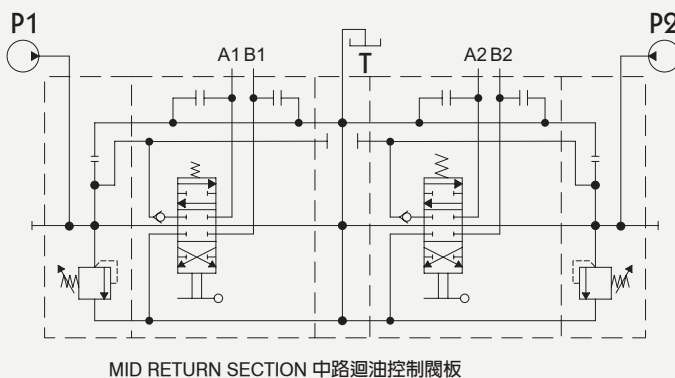
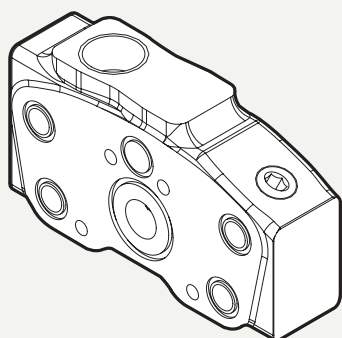


- Pressure range 直動式溢流閥壓力範圍 : 02 : 80~160 bar 03 : 125~1250 bar
- Pilot operated pressure range 引導式溢流閥壓力範圍 : X : 25~315 bar

Type EPCF



Type ECS



SN-6 Accessories 配件

Sectional Directional Control Valves 片式控制閥

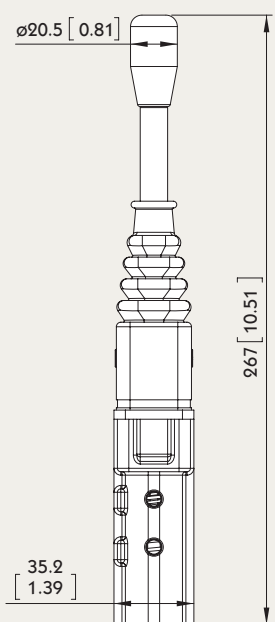
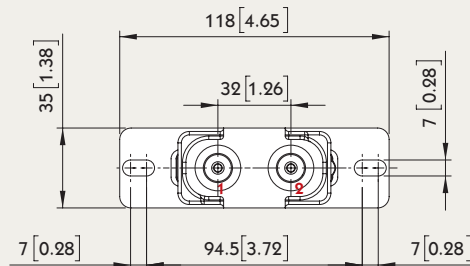
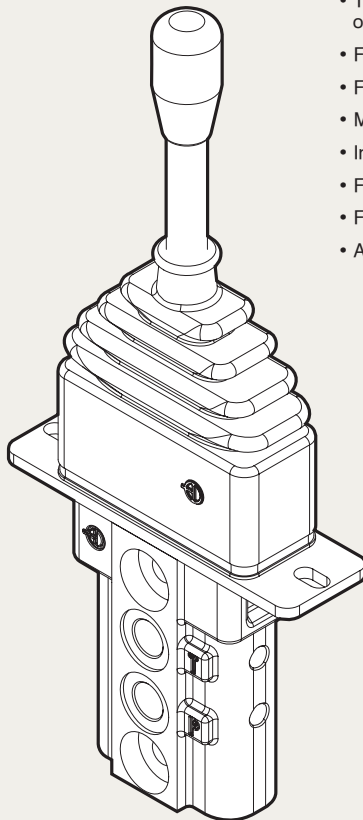
Type JHP-1

Specifications :

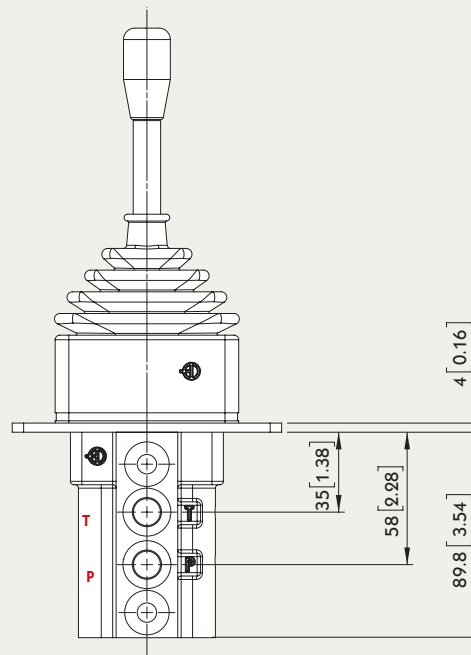
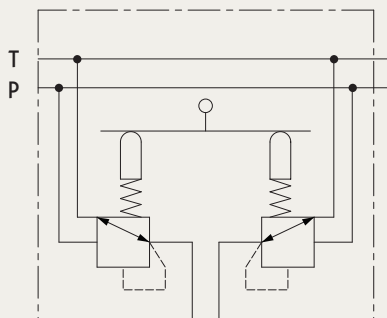
- This data sheet shows technical spec. with mineral oil of 46 mm²/s (cSt) viscosity at 40°C (104°F)
- Flow : 5 ~ 20 LPM
- Feeding pressure : 30 ~ 100 bar
- Max. backpressure : 3 bar
- Internal leakage at 30 bar : 10 ~ 18 cm³/min
- Fluid : mineral oil
- Fluid temperature : - 10 ~ 80°C
- Ambient temperature : - 40 ~ 60°C

規格 :

- 數據基準為液壓油黏度 46 mm²/s (cSt) 溫度 40°C (104°F)
- 流量 : 5 ~ 20 LPM
- 工作壓力 : 30 ~ 100 bar
- 最大背壓 : 3 bar
- 壓力 30 bar 的內洩量 : 10 ~ 18 cm³/min
- 介質 : 液壓油
- 介質溫度 : - 10 ~ 80°C
- 環境溫度 : - 40 ~ 60°C



HYDRAULIC SCHEME 液壓迴路 :



SN-6 Accessories 配件

Sectional Directional Control Valves 片式控制閥

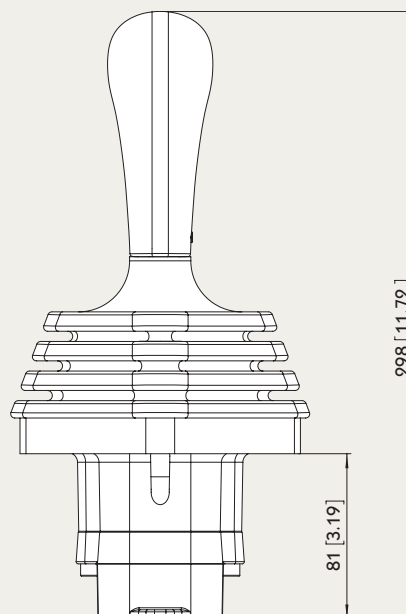
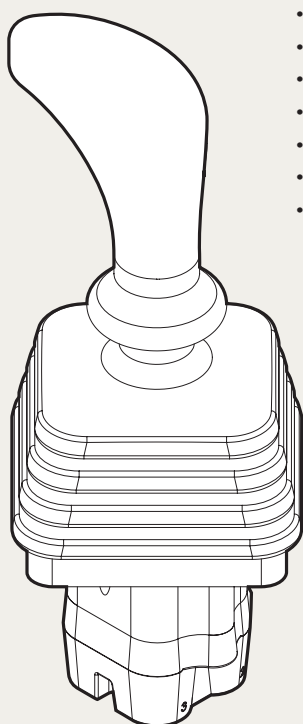
Type JHP-2

Specifications:

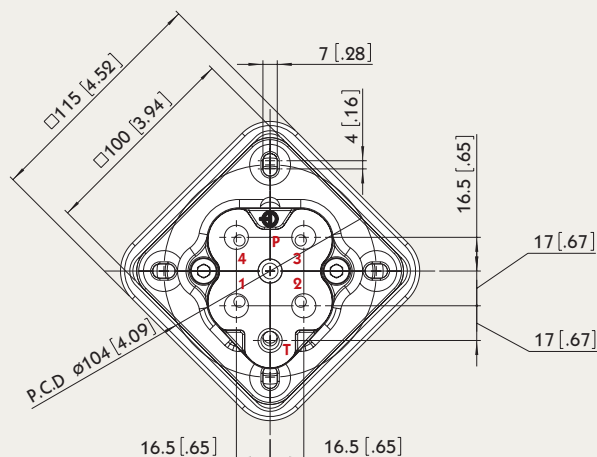
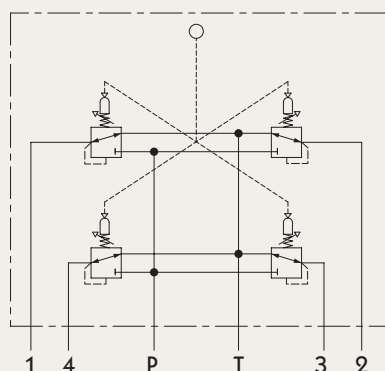
- This data sheet shows technical spec. with mineral oil of 46 mm²/s (cSt) viscosity at 40°C (104°F)
- Flow : 5 ~ 20 LPM
- Feeding pressure : 30 ~ 100 bar
- Max. backpressure : 3 bar
- Internal leakage at 30 bar : 10 ~ 18 cm³/min
- Fluid : mineral oil
- Fluid temperature : - 10 ~ 80°C
- Ambient temperature : - 40 ~ 60°C

規格 :

- 數據基準為液壓油黏度 46 mm²/s (cSt) 溫度 40°C (104°F)
- 流量 : 5 ~ 20 LPM
- 工作壓力 : 30 ~ 100 bar
- 最大背壓 : 3 bar
- 壓力 30 bar 的內洩量 : 10 ~ 18 cm³/min
- 介質 : 液壓油
- 介質溫度 : - 10 ~ 80°C
- 環境溫度 : - 40 ~ 60°C



HYDRAULIC SCHEME 液壓迴路 :



SN-6 Accessories 配件

Sectional Directional Control Valves 片式控制閥

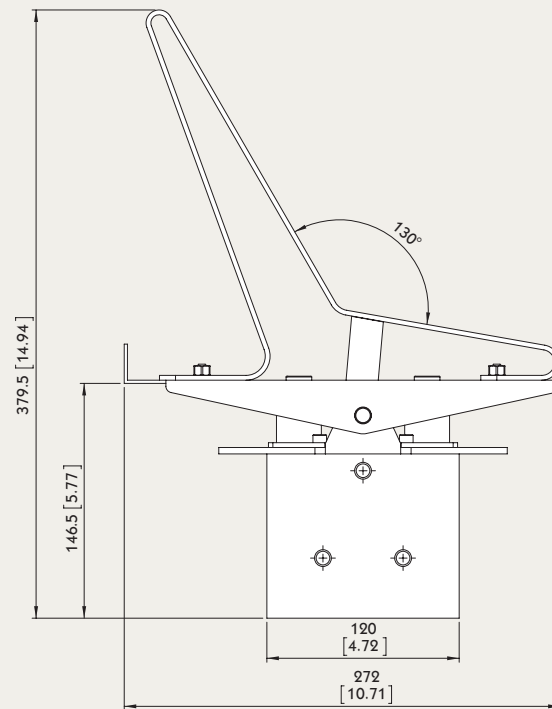
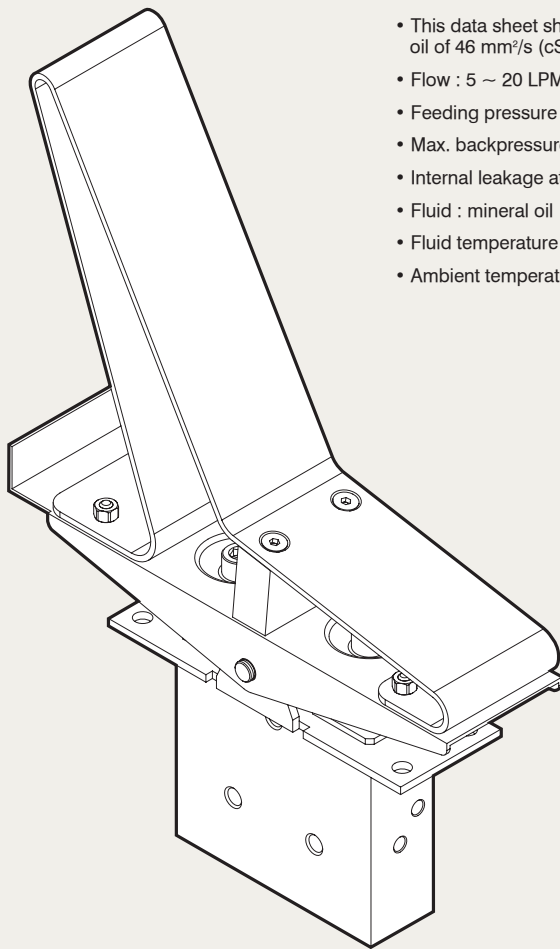
Type PHP-1

Specifications:

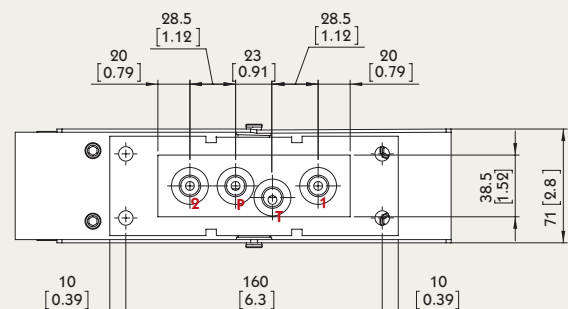
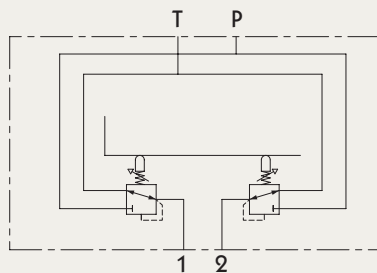
- This data sheet shows technical spec. with mineral oil of 46 mm²/s (cSt) viscosity at 40°C (104°F)
- Flow : 5 ~ 20 LPM
- Feeding pressure : 30 ~ 100 bar
- Max. backpressure : 3 bar
- Internal leakage at 30 bar : 10 ~ 18 cm³/min
- Fluid : mineral oil
- Fluid temperature : - 10 ~ 80°C
- Ambient temperature : - 40 ~ 60°C

規格：

- 數據基準為液壓油黏度 46 mm²/s (cSt) 溫度 40°C (104°F)
- 流量：5 ~ 20 LPM
- 工作壓力：30 ~ 100 bar
- 最大背壓：3 bar
- 壓力 30 bar 的內洩量：10 ~ 18 cm³/min
- 介質：液壓油
- 介質溫度：- 10 ~ 80°C
- 環境溫度：- 40 ~ 60°C



HYDRAULIC SCHEME 液壓迴路：



SN-6 outlet 回油側

Sectional Directional Control Valves 片式控制閥

Power Beyond Conversion plug (Closed center plug)

使用二次壓，需加裝 M8 塞頭

